

# SVT Episode #57

Device: **Evera XT DR DDBB2D4**

Serial Number:

Date of Visit: **20-Nov-2015 14:37:55**

Patient:

ID:

Physician:

Type	ATP Seq	Shocks	Success	ID#	Date	Time hh:mm	Duration hh:mm:ss	Avg bpm A/V	Max bpm A/V	Activity at Onset
SVT-Wavelet				57	21-Sep-2015	11:52	:50	214/214	375/---	Active

• V-V

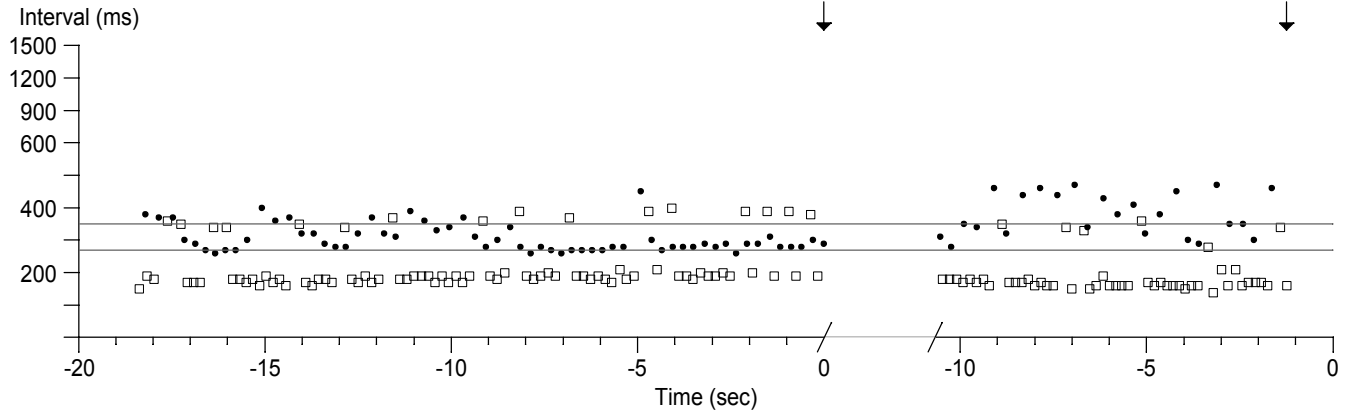
□ A-A

VF = 270 ms

VT = 350 ms

VT/VF Detection Withheld

Term.



# SVT Episode #57

Device: **Evera XT DR DDBB2D4**

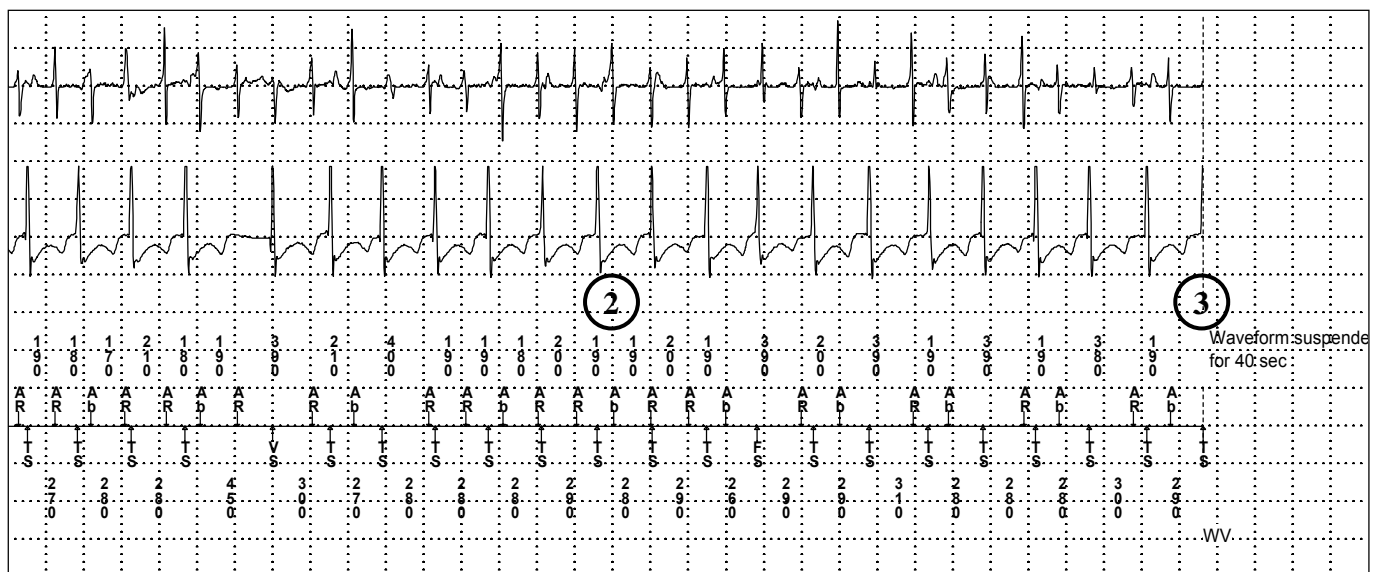
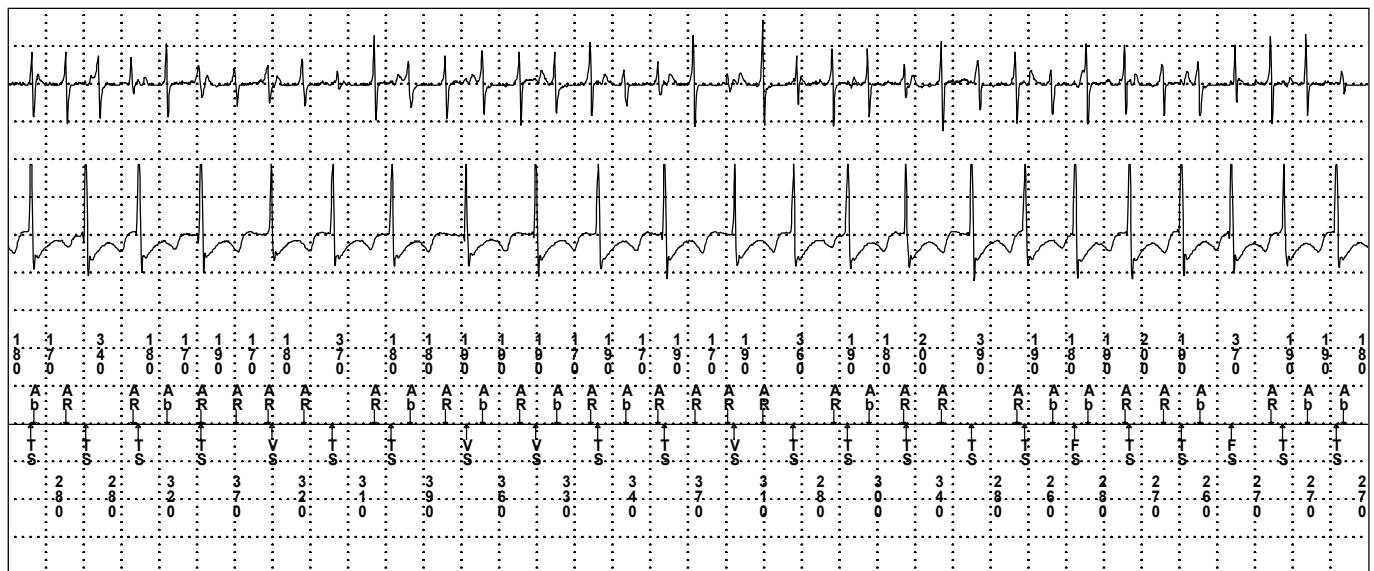
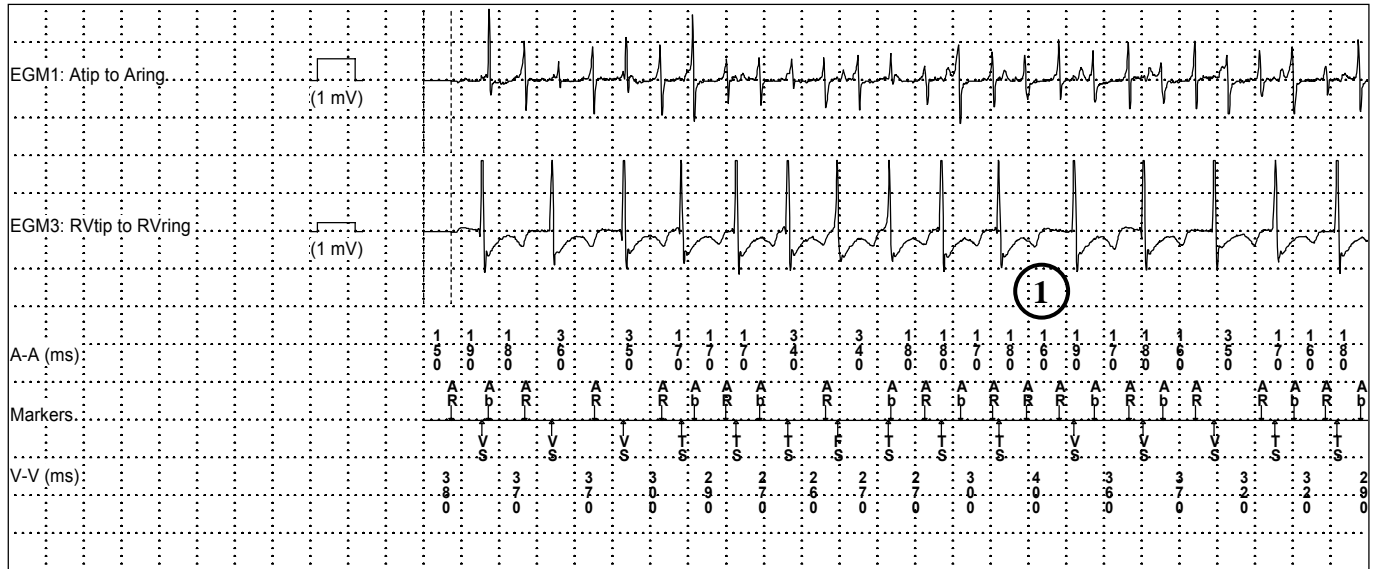
Serial Number:

Date of Visit: **20-Nov-2015 14:37:55**

Patient:

ID:

**Episode #57** Chart speed: 25.0 mm/sec



# SVT Episode #57

Device: **Evera XT DR DDBB2D4**

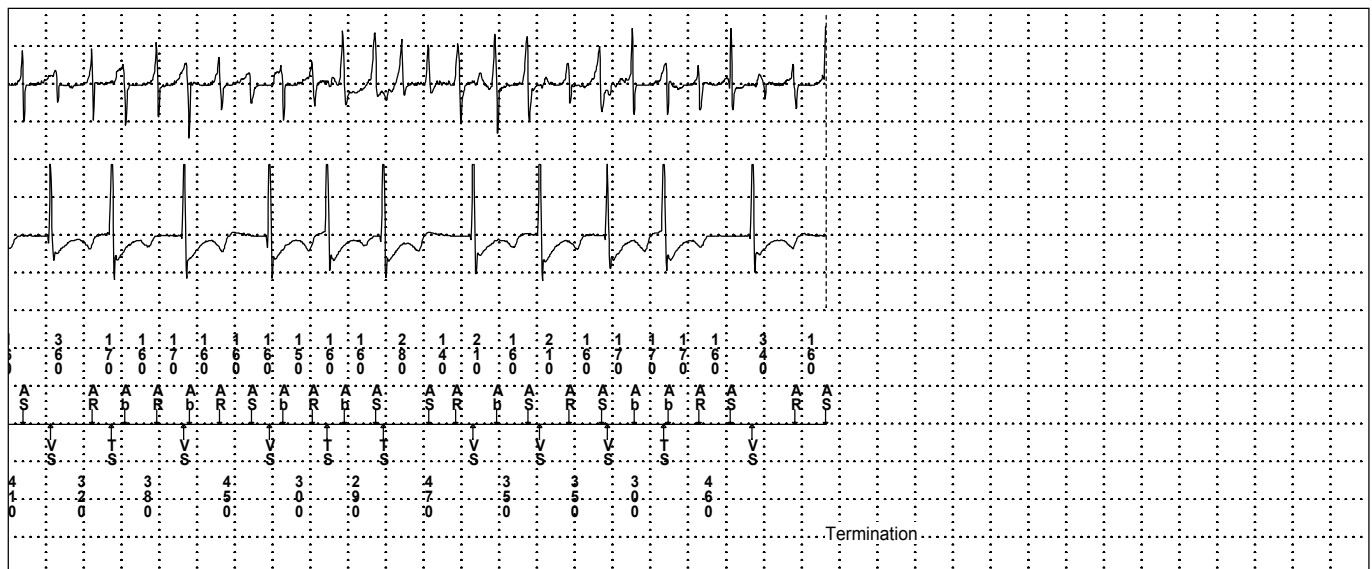
Serial Number:

Date of Visit: **20-Nov-2015 14:37:55**

Patient:

ID:

**Episode #57 Chart speed: 25.0 mm/sec**



**SVT Episode #57**Device: **Evera XT DR DDBB2D4**

Serial Number:

Date of Visit: **20-Nov-2015 14:37:55**

Patient:

ID:

Physician:

**Episode #57: 21-Sep-2015 11:52:45****Episode Summary**

Initial Type SVT - Wavelet (spontaneous)  
 Duration 50 sec  
 A/V Max Rate 375 bpm/---  
 V. Median 207 bpm (290 ms)  
 Activity at onset Active, Sensor = 76 bpm  
 Device was in Mode Switch During Episode.

**Other Criteria Triggered**

Wavelet

**Wavelet Measurements Prior to Initial Withholding of Detection**

Wavelet Result: SVT

Template Status: OK

-8. No Match 67 %  
 -7. Match 82 %  
 -6. Match 82 %  
 -5. Match 88 %  
 -4. Match 73 %  
 -3. Match 76 %  
 -2. Match 73 %  
 -1. Match 88 %

**Parameter Settings Initial Redetect V. Interval (Rate)**

Parameter	Settings	Initial	Redetect	V. Interval (Rate)
VF	On	24/32	12/16	270 ms (222 bpm)
FVT	Off			
VT	On	16	12	350 ms (171 bpm)
Monitor	Off	28		

**PR Logic/Wavelet**

AF/Afl On  
 Sinus Tach On  
 Other 1:1 SVTs Off  
 Wavelet On, Match = 70 %  
 Template 25-Mar-2014, Auto = On  
 SVT V. Limit 270 ms

**Other Enhancements**

Stability Off  
 Onset Off  
 High Rate Timeout  
 VF Zone Only Off  
 All Zones Off  
 TWave On  
 RV Lead Noise On+Timeout  
 Timeout 0.75 min

**Polarity RV**

Pace Polarity Bipolar  
 Sense Polarity Bipolar

EGM	Source	Range	Sensitivity
EGM1	Atip to Aring	+/- 8 mV	Atrial 0.3 mV
EGM3	RVtip to RVring	+/- 8 mV	RV 0.3 mV