



## Episode: SVT (150 bpm / 400 ms)

VT/VF Episode 1 of 1

Page 1 of 3

Duration 00:22 (M:S) No Alerts  
Detection Criteria 150 - 221 bpm

### Therapy

No therapies were delivered

### Results

### Diagnosis Summary

	Diagnosis
	SVT
Time to Diagnosis	14.50sec
Rate (CL)	150 bpm (400 ms)
Zone	VT- 1 (Monitor)
VT Diagnosis Criteria	All
Rate Branch Classification	Sinus Tach (V = A) Rate Branch

### Morphology

	On, $\geq 60\%$ is a match, $\geq 5$ matches indicate SVT
Min Match Score	77%
Max Non-Match Score	n/a
No. Template Matches	8 of 8 (SVT Indicated)

### Sudden Onset

	On, $< 20\%$ indicates SVT
Max Delta	1 % (SVT Indicated)

### SVT Criteria Statistics

SVT Diagnoses during this episode 1

### Measured SVT Discriminator values for Episode

Min Match Score	77 %	Max Non-Match Score	0 %
Template Used	21 Oct 2009 12:07	Max Onset Delta	1 %

### DeFT Response™ Settings (Shock Waveform)

			1st Phase	2nd Phase
Waveform	Biphasic	VF Shocks (Defib)	65 %	65 %
Waveform Mode	Tilt	VT Shocks (CVRT)	Same as Defib	Same as Defib
Shock Configuration	RV to Can			
RV Polarity	Anode(+)			
Defib Max Sensitivity	0.3 mV			

# Episode: SVT (150 bpm / 400 ms)

VT/VF Episode 1 of 1

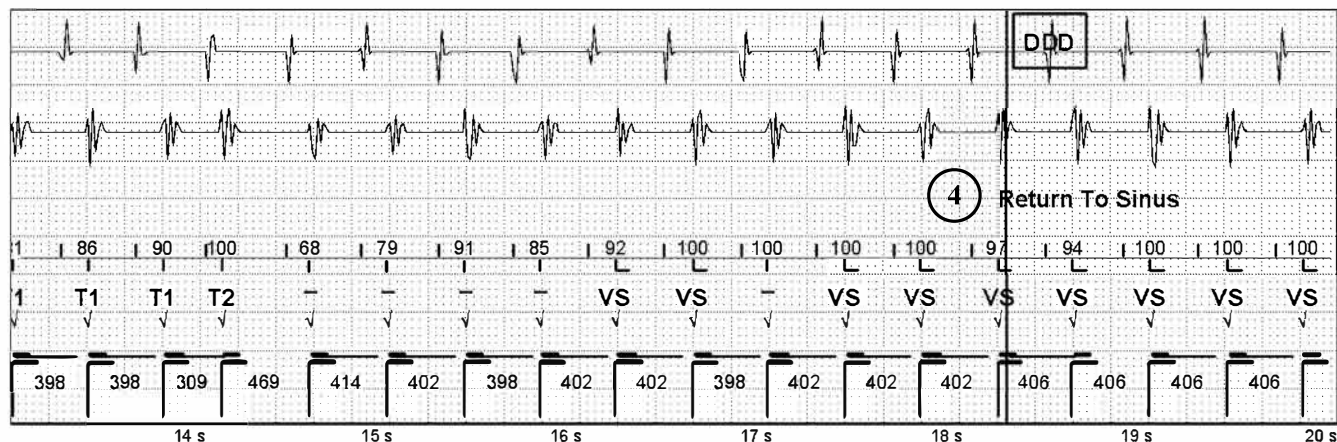
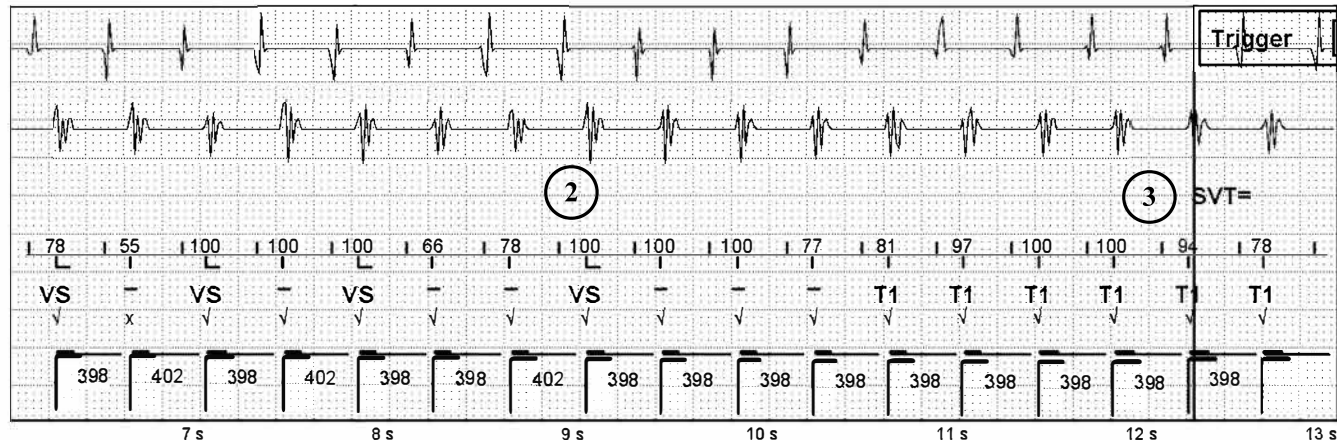
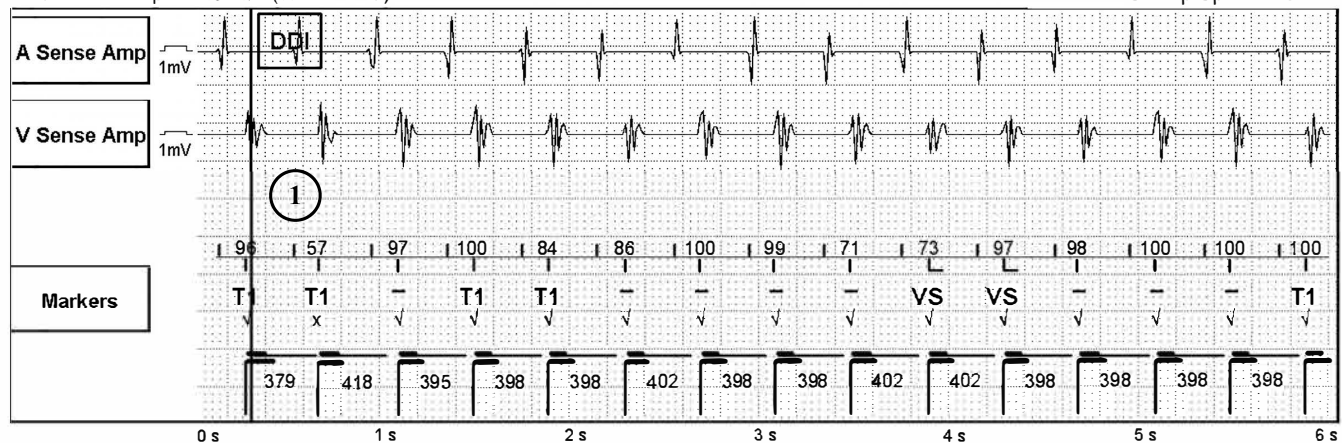
Page 2 of 3

1: A Sense Amp AutoGain (0.8 mm/mV)

3: Markers

2: V Sense Amp AutoGain (0.4 mm/mV)

Sweep Speed: 25 mm/s





## Episode: SVT (150 bpm / 400 ms) (Continued)

VT/VF Episode 1 of 1

Page 3 of 3

1: A Sense Amp AutoGain (0.8 mm/mV)

3: Markers

2: V Sense Amp AutoGain (0.4 mm/mV)

Sweep Speed: 25 mm/s

