

Episode: VT-1 (176 bpm / 340 ms)

VT/VF Episode 3 of 17

Page 1 of 3

Duration 00:30 (M:S)
Detection Criteria 150 - 180 bpm

Alerts



Therapy accelerated rhythm
ATP therapy unsuccessful
Three or more VT/VF episodes in 24 hours

Therapy

1) ATP
2) ATP x 2
3) CVRT 6.0 J (339V)

Results

1) Accel to VT-2
2) VT-2
3) Below Rate Detection
(CL 705 ms)

HV Therapy

Last HV Lead Impedance 37 Ω
Last Charge Time 1.3 sec
Delivered PW +4.8 ms, -4.8 ms

ATP Therapy Details

VT-1 ATP Therapy

Therapy 1

Burst 1 272, 272, 272, 272, 272, 272, 272 ms

VT-2 ATP Therapy

Therapy 1

Burst 1 256, 256, 256, 256, 256, 256, 256 ms
Burst 2 248, 248, 248, 248, 248, 248, 248 ms

Diagnosis Summary

Diagnosis

Time to Diagnosis 7.50 sec
Rate (CL) 176 bpm (340 ms)
Zone VT-1
Rate Branch Classification VT (V > A) Rate Branch

SVT Criteria Statistics

SVT Diagnoses during this episode 0

DeFT Response™ Settings (Shock Waveform)

Waveform Biphasic
Waveform Mode Tilt
Shock Configuration RV to SVC & Can
RV Polarity Anode(+)
Defib Max Sensitivity 0.3 mV

VF Shocks (Defib)
VT Shocks (CVRT)

1st Phase

65 %
Same as Defib

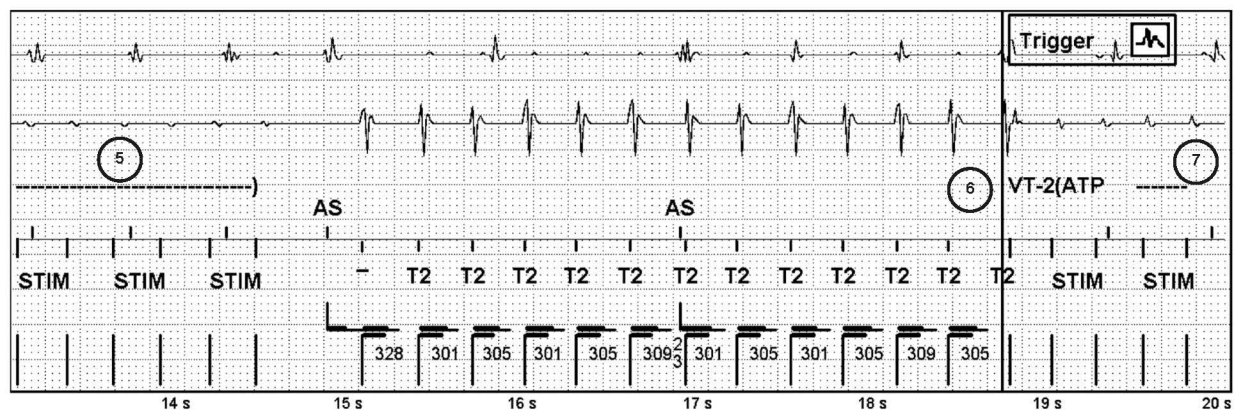
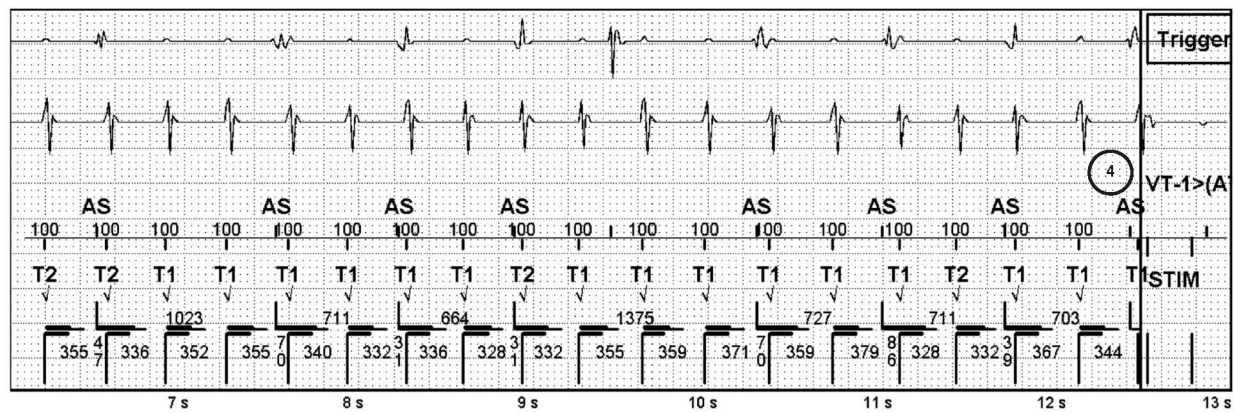
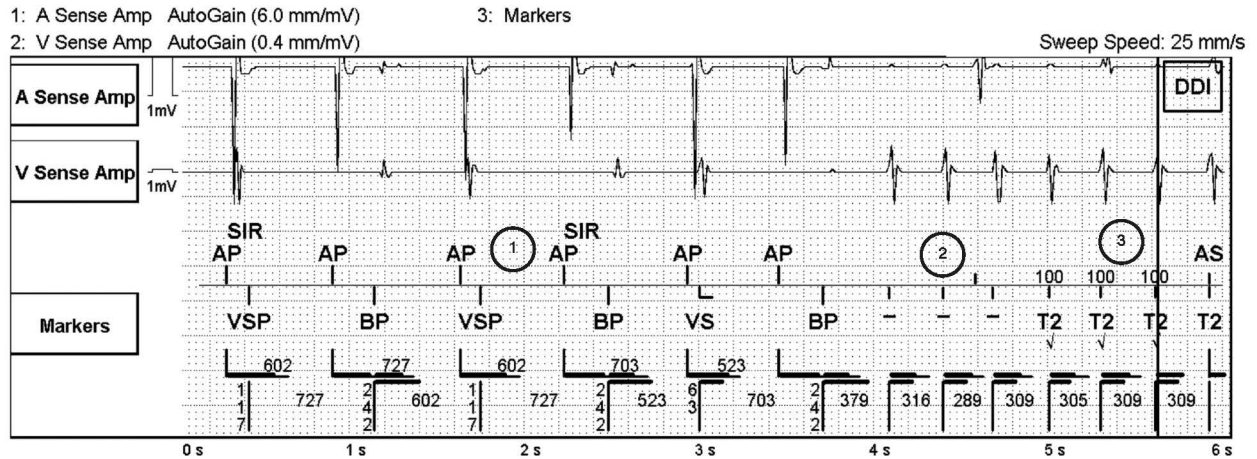
2nd Phase

65 %
Same as Defib

Episode: VT-1 (176 bpm / 340 ms)

VT/VF Episode 3 of 17

Page 2 of 3



Episode: VT-1 (176 bpm / 340 ms) (Continued)

VT/VF Episode 3 of 17

Page 3 of 3

1: A Sense Amp AutoGain (6.0 mm/mV)

3: Markers

2: V Sense Amp AutoGain (0.4 mm/mV)

Sweep Speed: 25 mm/s

