

Episode: SVT (179 bpm / 335 ms)

VT/VF Episode 1 of 1

Page 1 of 3

Duration 00:16 (M:S)
Detection Criteria 160 - 221 bpm

Alerts

SVT discriminators disagree



Therapy

Results

No therapies were delivered

Diagnosis Summary

	Diagnosis
	SVT
Time to Diagnosis	3.75 sec
Rate (CL)	179 bpm (335 ms)
Zone	VT-1
VT Diagnosis Criteria	All
Rate Branch Classification	VT (V > A) Rate Branch (Passive)

Morphology

On, $\geq 60\%$ is a match, ≥ 5 matches indicate SVT
 Min Match Score 92%
 Max Non-Match Score n/a
 No. Template Matches 8 of 8 **(SVT Indicated)**

Sudden Onset

On, < 20 % indicates SVT
 Max Delta 50 % **(VT Indicated)**

Interval Stability

On, ≥ 50 ms indicates SVT (SIH Passive, ≥ 2 intervals indicates SVT)
 Stability Delta 25 ms **(VT Indicated)**
 SIH Count 0 **(Passive: VT Indicated)**

SVT Criteria Statistics

SVT Diagnoses during this episode 4

Measured SVT Discriminator values for Episode

Min Match Score	89 %	Min/Max Stability Delta	25 ms / 55 ms
Max Non-Match Score	0 %	Min/Max SIH Count	0 / 0
Template Used	22 Apr 2010 14:36	Max Onset Delta	50 %

DeFT Response™ Settings (Shock Waveform)

Waveform	Biphasic	VF Shocks (Defib)	65 %	1st Phase	65 %	2nd Phase
Waveform Mode	Tilt	VT Shocks (CVRT)	Same as Defib	Same as Defib	Same as Defib	
Shock Configuration	RV to Can					
RV Polarity	Anode(+)					
Defib Max Sensitivity	0.3 mV					



Episode: SVT (179 bpm / 335 ms)

VT/VF Episode 1 of 1

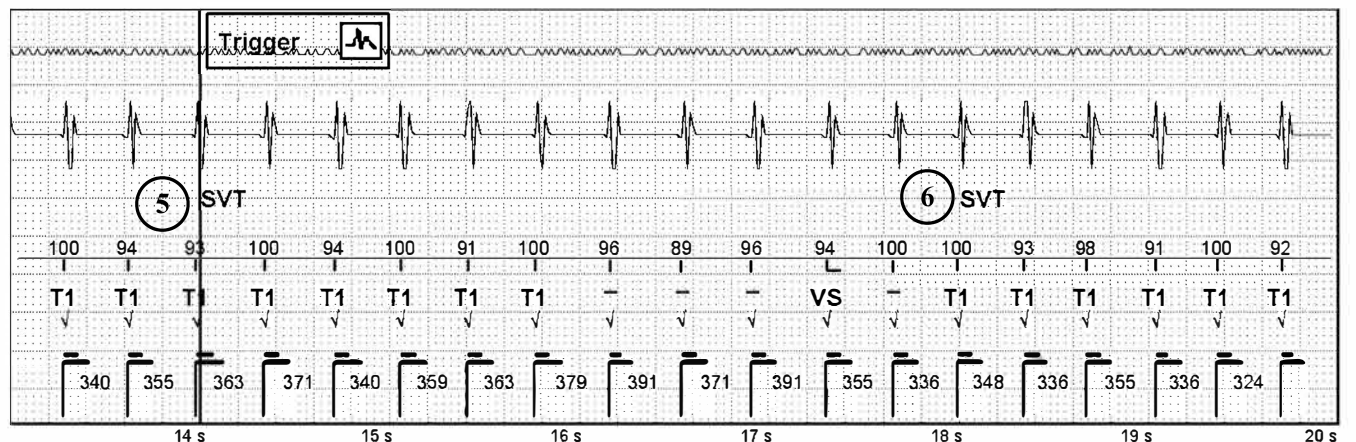
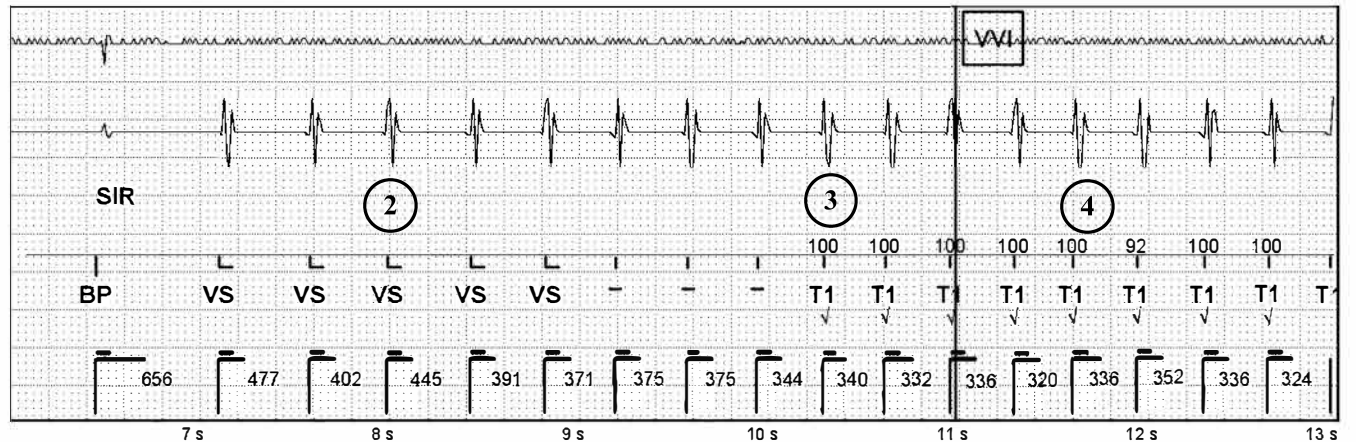
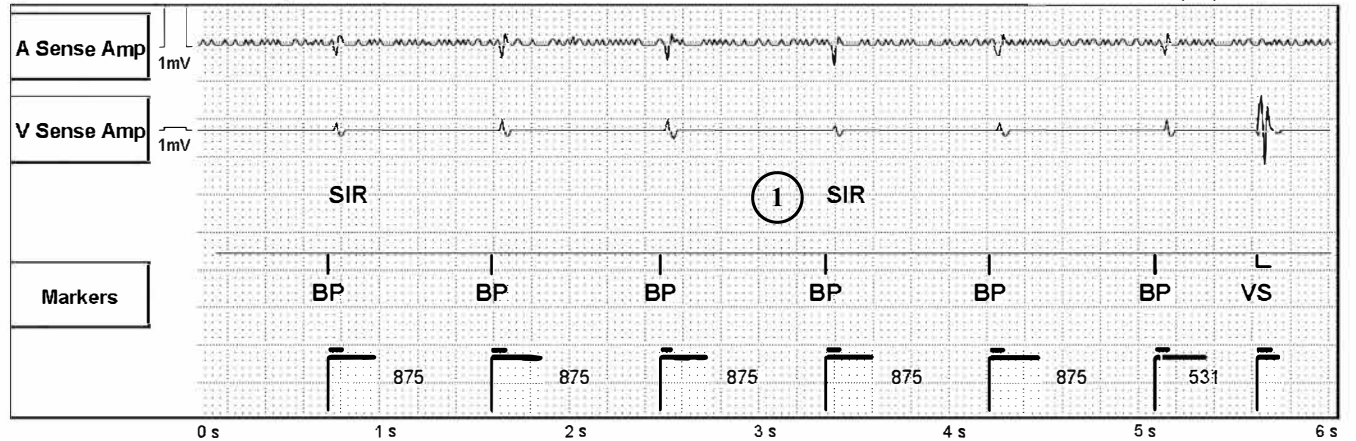
Page 2 of 3

1: A Sense Amp AutoGain (10 mm/mV)

3: Markers

2: V Sense Amp AutoGain (0.4 mm/mV)

Sweep Speed: 25 mm/s





Episode: SVT (179 bpm / 335 ms) (Continued)

VT/VF Episode 1 of 1

Page 3 of 3

1: A Sense Amp AutoGain (10 mm/mV)

3: Markers

2: V Sense Amp AutoGain (0.4 mm/mV)

Sweep Speed: 25 mm/s

