

## Episode: SVT (166 bpm / 360 ms)

VT/VF Episode 9 of 10

Page 1 of 3

Duration 00:12 (M:S)  
Detection Criteria 162 - 239 bpm

Alerts



SVT discriminators disagree

### Therapy

No therapies were delivered

### Results

### Diagnosis Summary

	Diagnosis
	<b>SVT</b>
Time to Diagnosis	7.75 sec
Rate (CL)	166 bpm (360 ms)
Zone	VT-1 (Monitor)
VT Diagnosis Criteria	All
Rate Branch Classification	AF/AFL (V < A) Rate Branch

### Morphology

On, ≥ 60% is a match, ≥ 5 matches indicate SVT  
 Min Match Score 63%  
 Max Non-Match Score 56%  
 No. Template Matches 6 of 8 **(SVT Indicated)**

### Interval Stability

On, ≥ 80 ms indicates SVT (AVA Delta Passive, < 60 ms indicates SVT)  
 Stability Delta 30 ms **(VT Indicated)**  
 AV Association Delta: 25 ms **(Passive: SVT Indicated)**

### SVT Criteria Statistics

SVT Diagnoses during this episode 1

### Measured SVT Discriminator values for Episode

Min Match Score	63 %	Min/Max Stability Delta	30 ms / 30 ms
Max Non-Match Score	56 %	Min/Max AV Association Delta	25 ms / 25 ms
Template Used	11 Feb 2011 9:58		

### DeFT Response™ Settings (Shock Waveform)

Waveform	Biphasic	VF Shocks (Defib)	1st Phase	2nd Phase
Waveform Mode	Tilt	VT Shocks (CVRT)	65 %	65 %
Shock Configuration	RV to SVC & Can		Same as Defib	Same as Defib
RV Polarity	Anode(+)			
Defib Max Sensitivity	0.5 mV			



## Episode: SVT (166 bpm / 360 ms)

VT/VF Episode 9 of 10

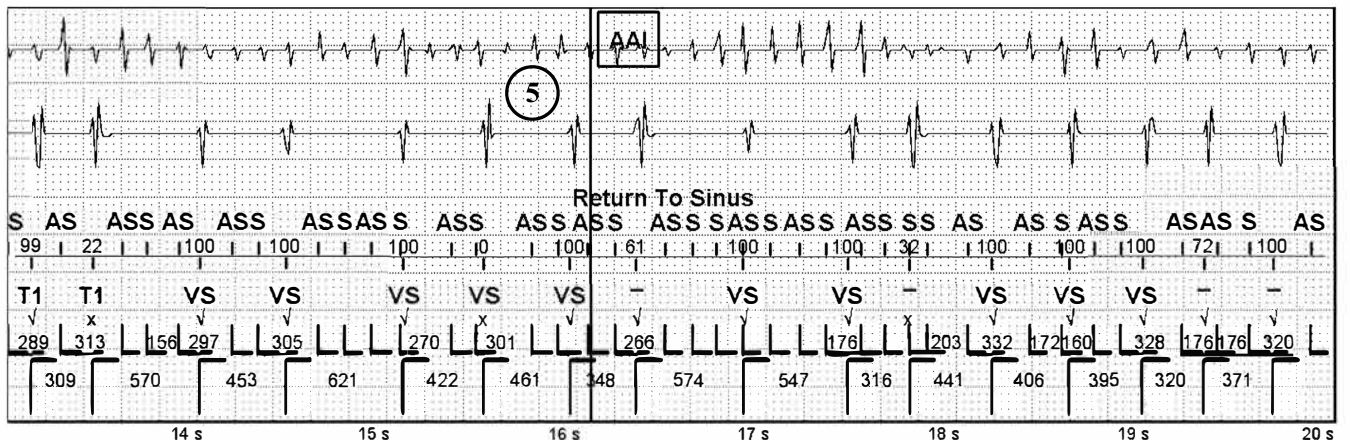
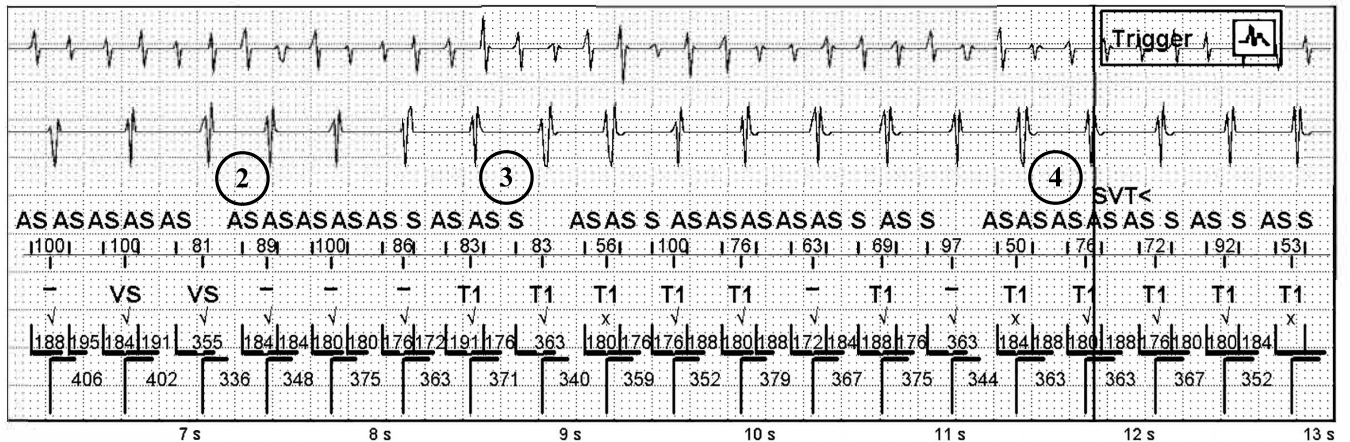
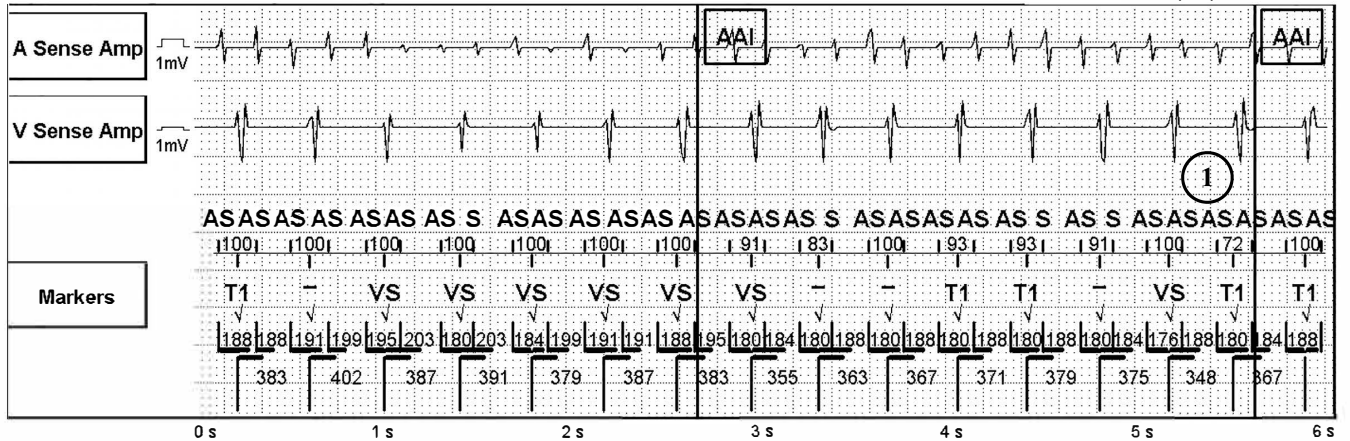
Page 2 of 3

1: A Sense Amp AutoGain (1.1 mm/mV)

3: Markers

2: V Sense Amp AutoGain (0.4 mm/mV)

Sweep Speed: 25 mm/s





## Episode: SVT (166 bpm / 360 ms) (Continued)

VT/VF Episode 9 of 10

Page 3 of 3

1: A Sense Amp AutoGain (1.1 mm/mV)

3: Markers

2: V Sense Amp AutoGain (0.4 mm/mV)

Sweep Speed: 25 mm/s

