

Episode: VF (230 bpm / 260 ms)

VT/VF Episode 6 of 6

Page 1 of 11

Duration 128:24 (M:S)
Detection Criteria 230 bpm

Alerts



All therapies delivered without terminating arrhythmia
Duration over 1 minute

Therapy

1) ATP x 1
2) Defib 36.0 J (844V)
3) Defib 40.0 J (890V)
4) Defib x 4
40.0 J (890V)
5) No Therapies Available

Results

1) VF
2) VF
3) VF
4) VF
5) Below Rate Detection
(CL 775 ms)

HV Therapy

Last HV Lead Impedance 69 Ω
First Charge Time 8.4 sec
Last Charge Time 10.5 sec
Delivered PW +7.8 ms, -7.8 ms

ATP Therapy Details

VF ATP Therapy

Therapy

Burst 1 220, 220, 220, 220, 220, 220, 220, 220 ms

Diagnosis Summary

	Initial Diagnosis	Diagnosis
	SVT	VF
Time to Diagnosis		5.6 min
Rate (CL)	151 bpm (395 ms)	230 bpm (260 ms)
Zone	VT-1 (Monitor)	
VT Diagnosis Criteria	Any	
Rate Branch Classification	Sinus Tach (V = A) Rate Branch	

Morphology

On, ≥ 60% is a match, ≥ 5 matches indicate SVT
Min Match Score 100%
Max Non-Match Score n/a
No. Template Matches 8 of 8 (SVT Indicated)

Sudden Onset

On, < 100 ms indicates SVT
Max Delta 5 ms (SVT Indicated)

SVT Criteria Statistics

SVT Diagnoses during this episode 133
Template Used 19 Apr 2011 14:46

DeFT Response™ Settings (Shock Waveform)

			1st Phase	2nd Phase
Waveform	Biphasic	VF Shocks (Defib)	65 %	65 %
Waveform Mode	Tilt	VT Shocks (CVRT)	Same as Defib	Same as Defib
Shock Configuration	RV to Can			
RV Polarity	Anode(+)			
Defib Max Sensitivity	0.5 mV			



Episode: VF (230 bpm / 260 ms)

VT/VF Episode 6 of 6

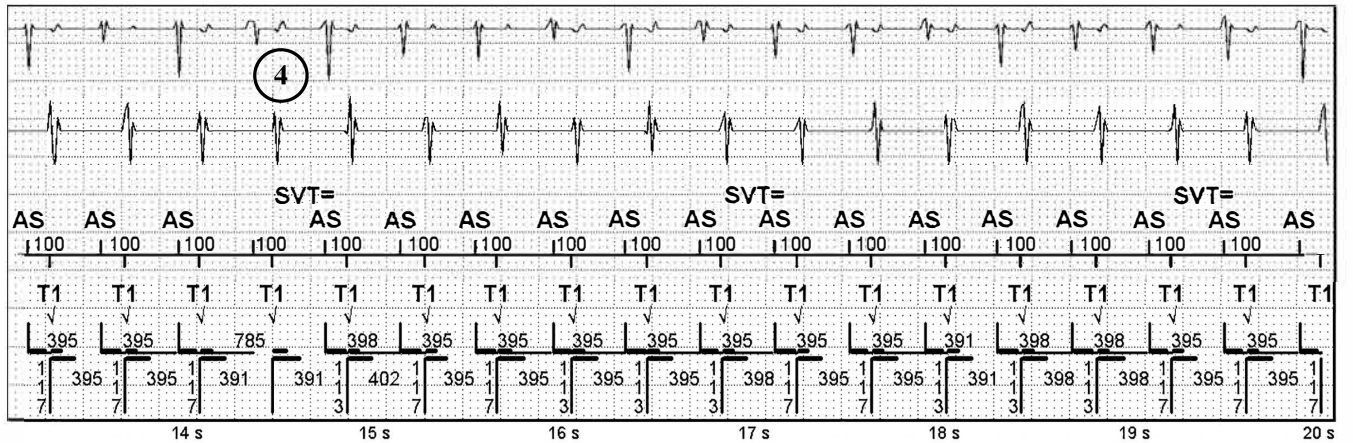
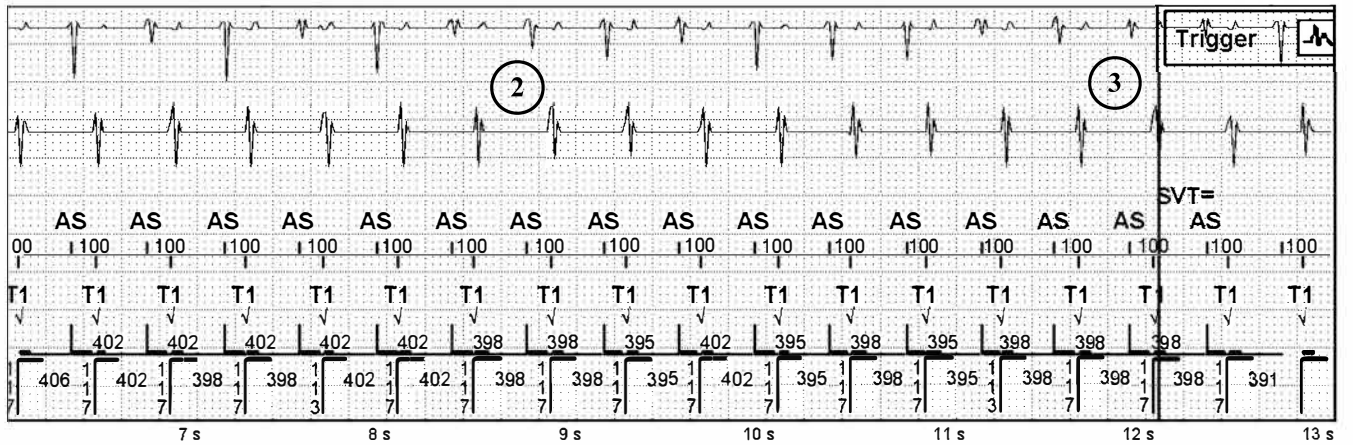
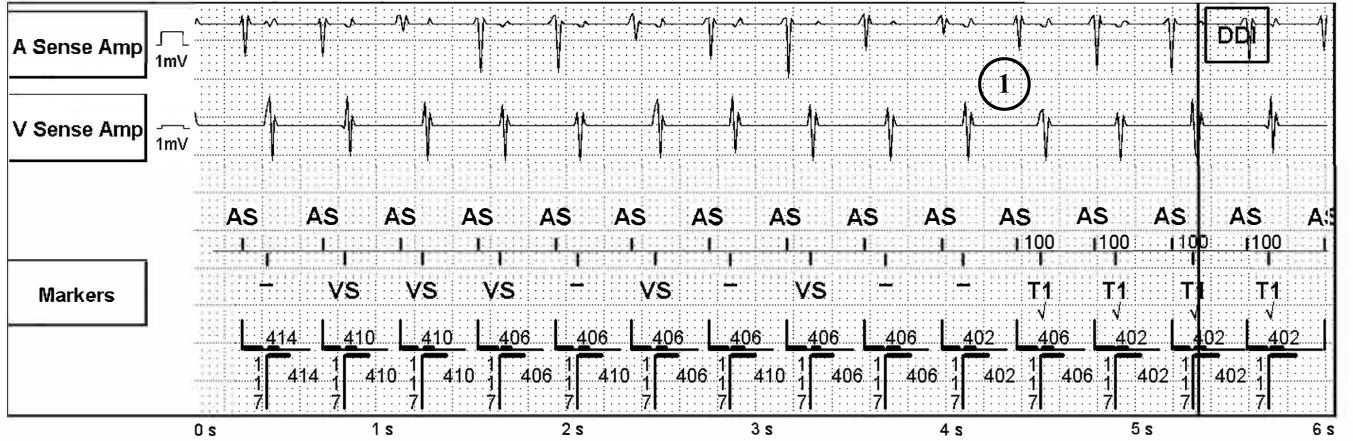
Page 2 of 11

1: A Sense Amp AutoGain (2.1 mm/mV)

3: Markers

2: V Sense Amp AutoGain (0.4 mm/mV)

Sweep Speed: 25 mm/s



Episode: VF (230 bpm / 260 ms) (Continued)

VT/VF Episode 6 of 6

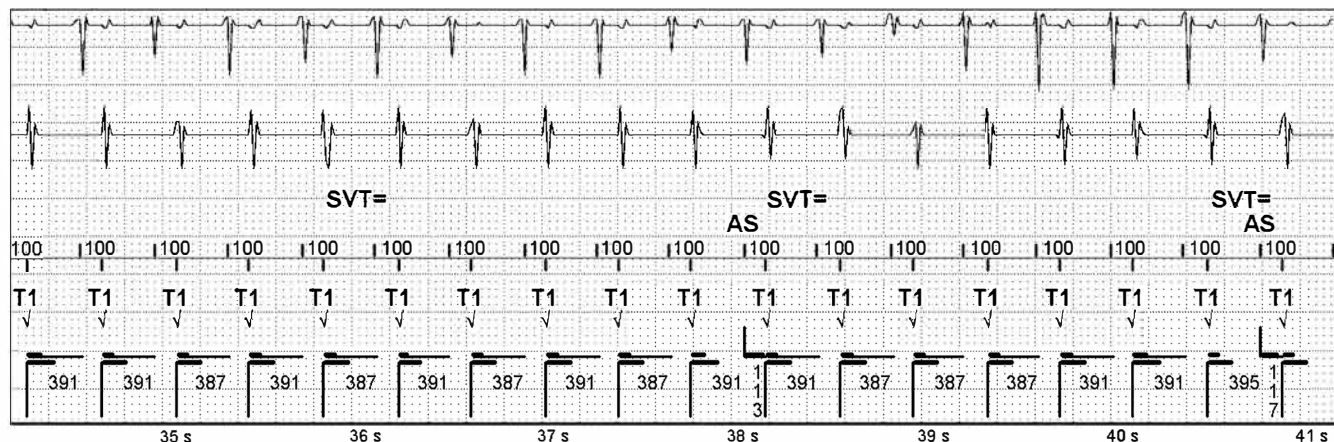
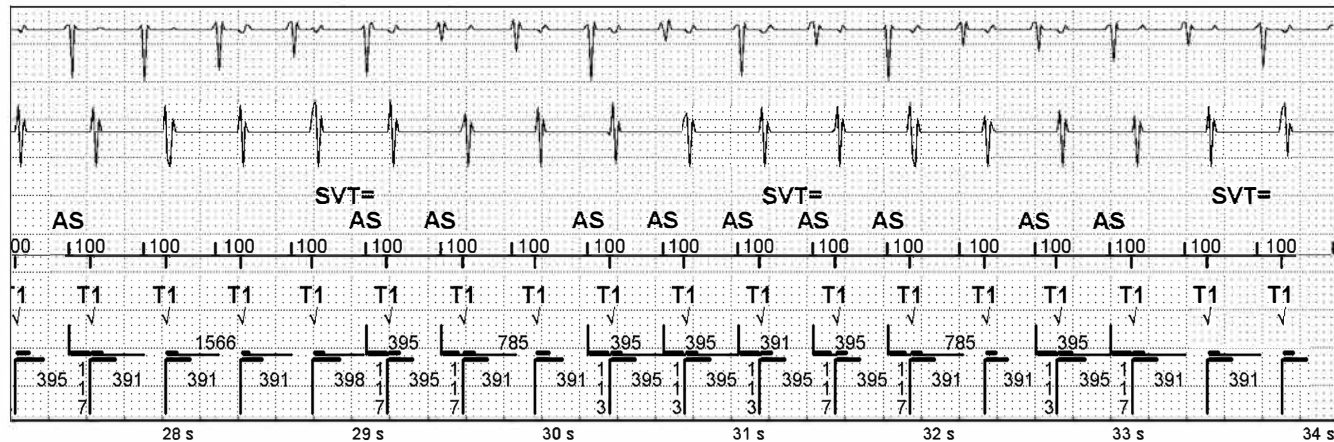
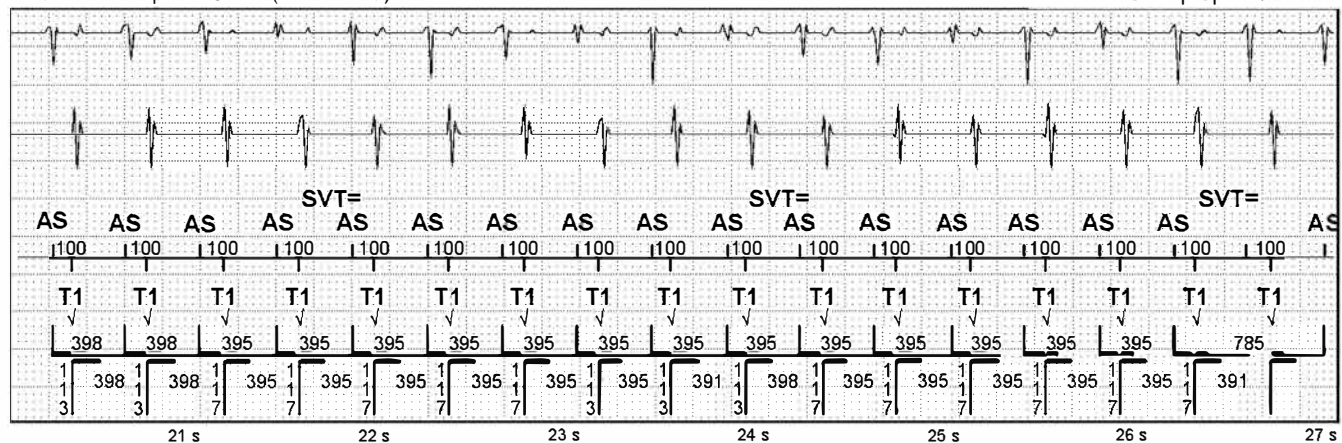
Page 3 of 11

1: A Sense Amp AutoGain (2.1 mm/mV)

3: Markers

2: V Sense Amp AutoGain (0.4 mm/mV)

Sweep Speed: 25 mm/s



Episode: VF (230 bpm / 260 ms) (Continued)

VT/VF Episode 6 of 6

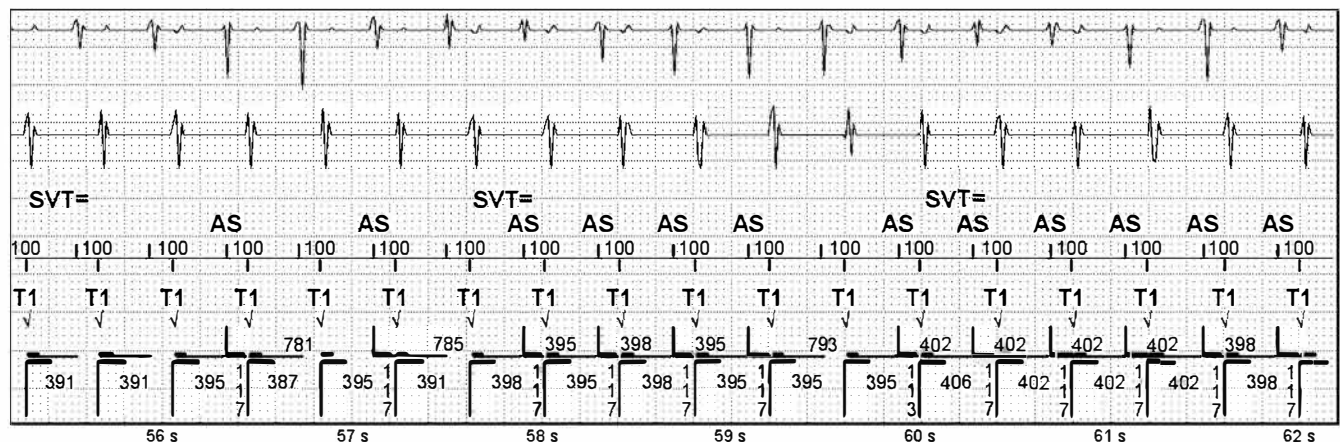
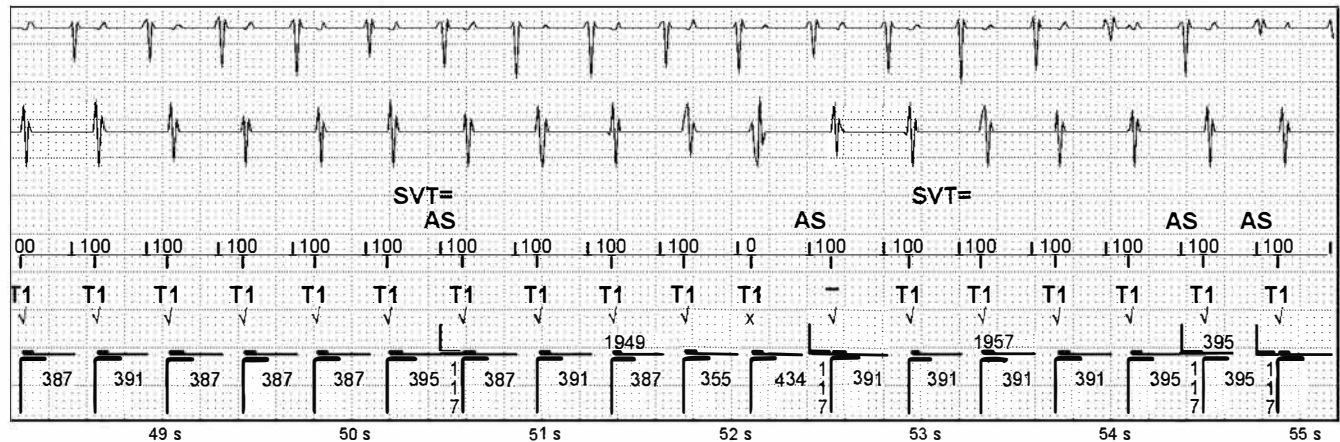
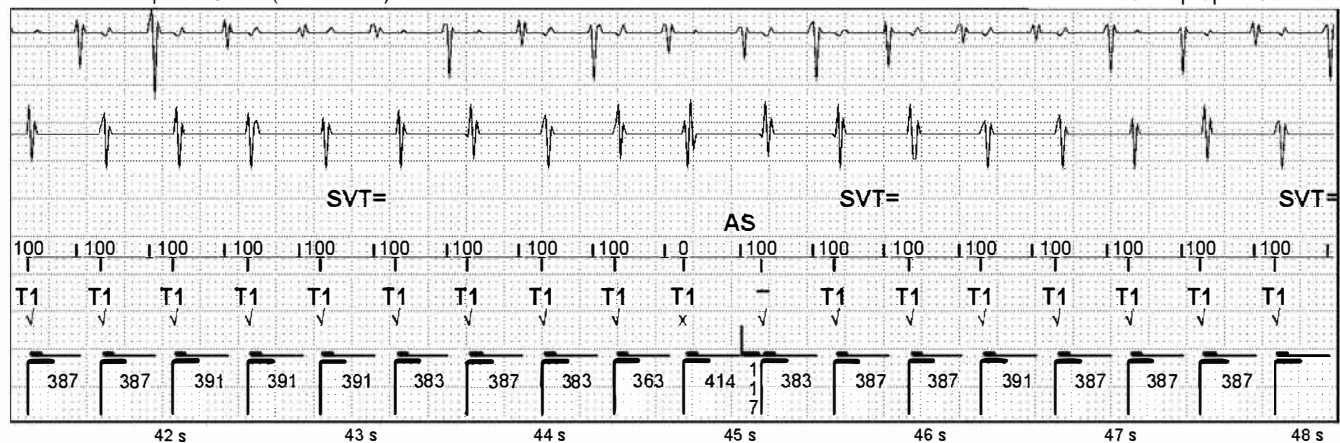
Page 4 of 11

1: A Sense Amp AutoGain (2.1 mm/mV)

3: Markers

2: V Sense Amp AutoGain (0.4 mm/mV)

Sweep Speed: 25 mm/s



Episode: VF (230 bpm / 260 ms) (Continued)

VT/VF Episode 6 of 6

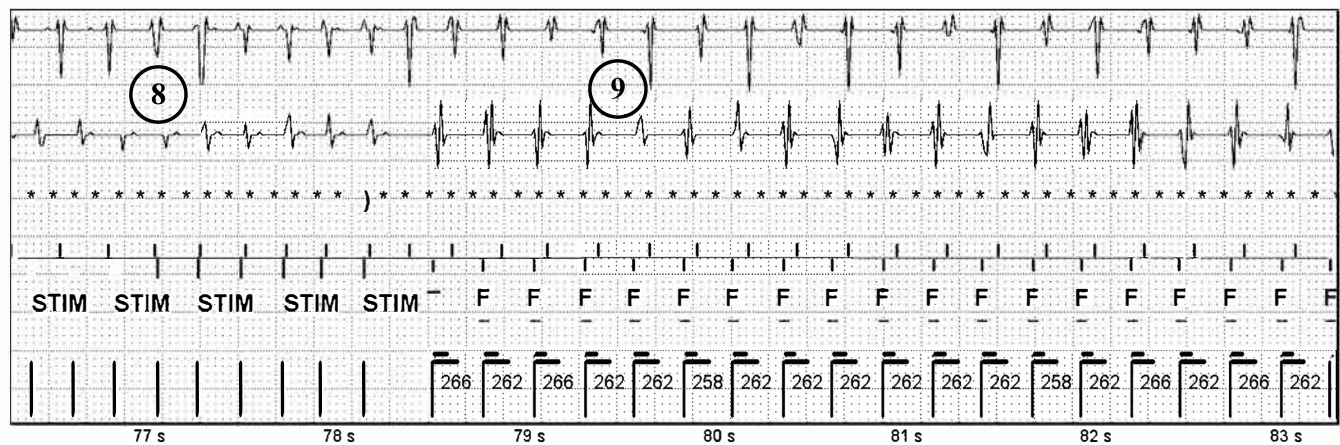
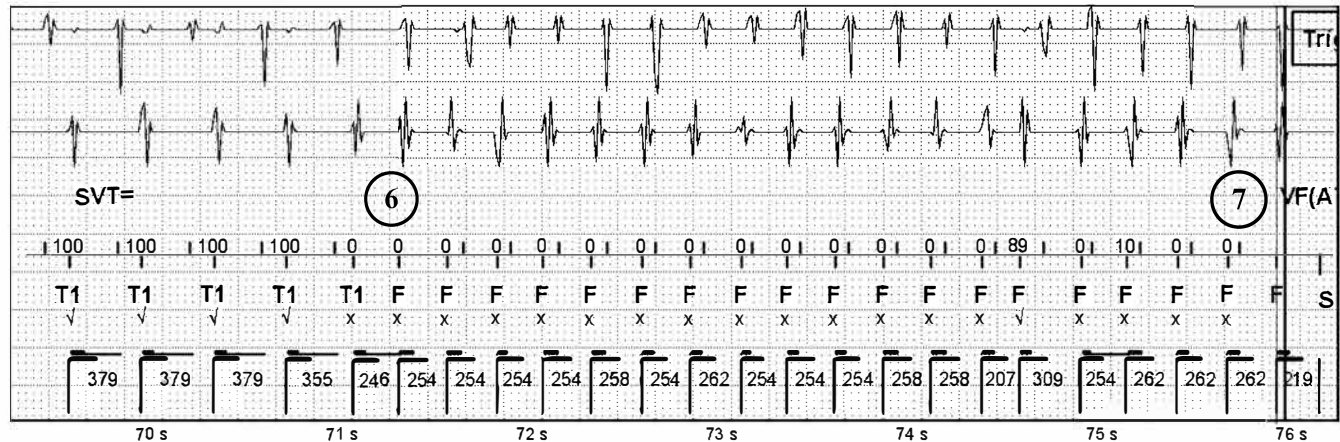
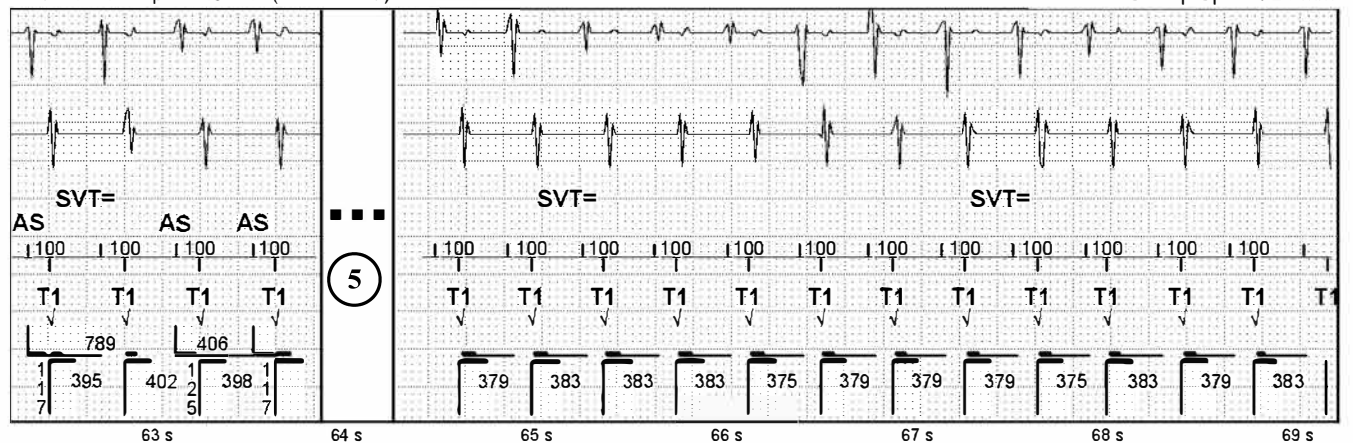
Page 5 of 11

1: A Sense Amp AutoGain (2.1 mm/mV)

3: Markers

2: V Sense Amp AutoGain (0.4 mm/mV)

Sweep Speed: 25 mm/s





Episode: VF (230 bpm / 260 ms) (Continued)

VT/VF Episode 6 of 6

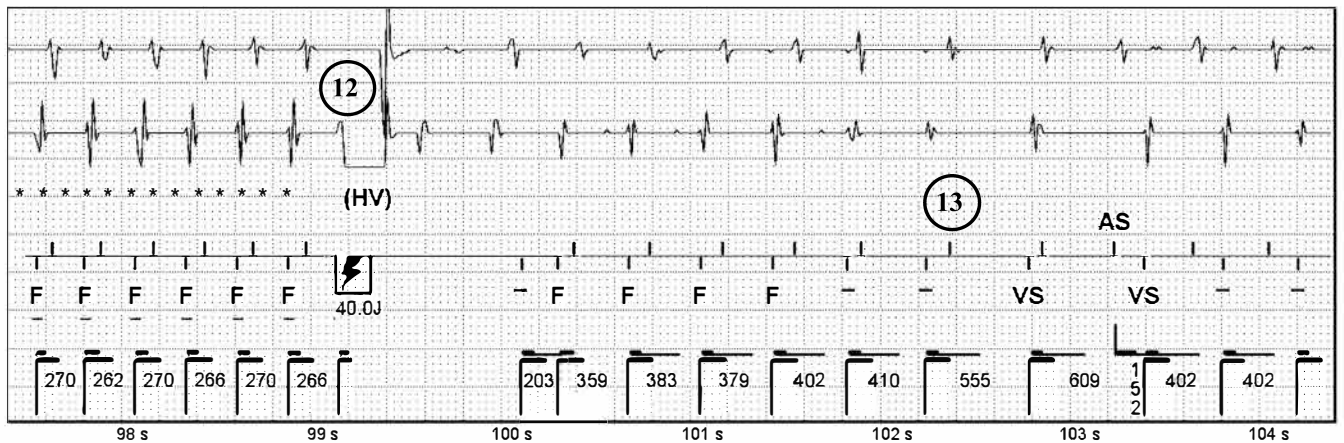
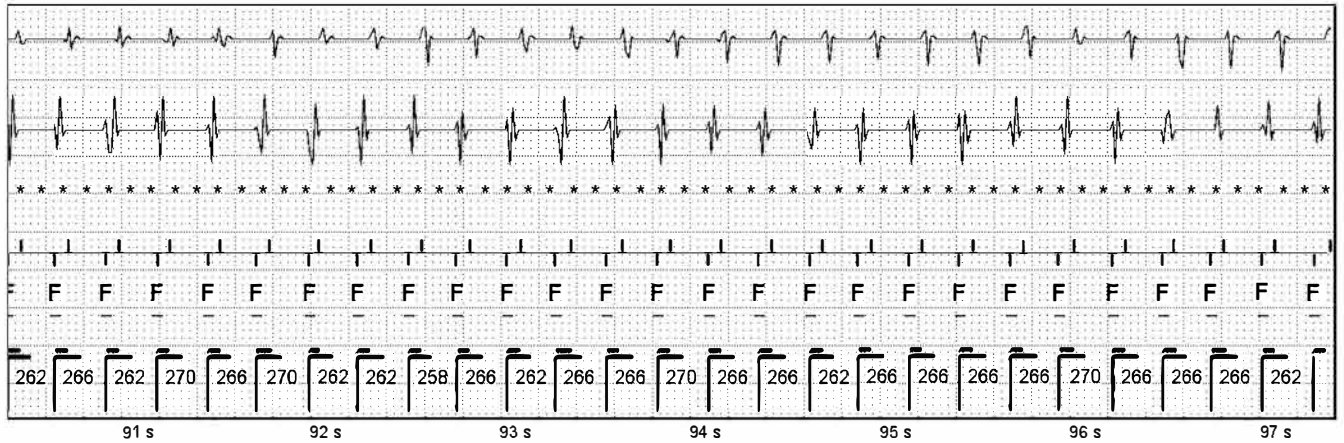
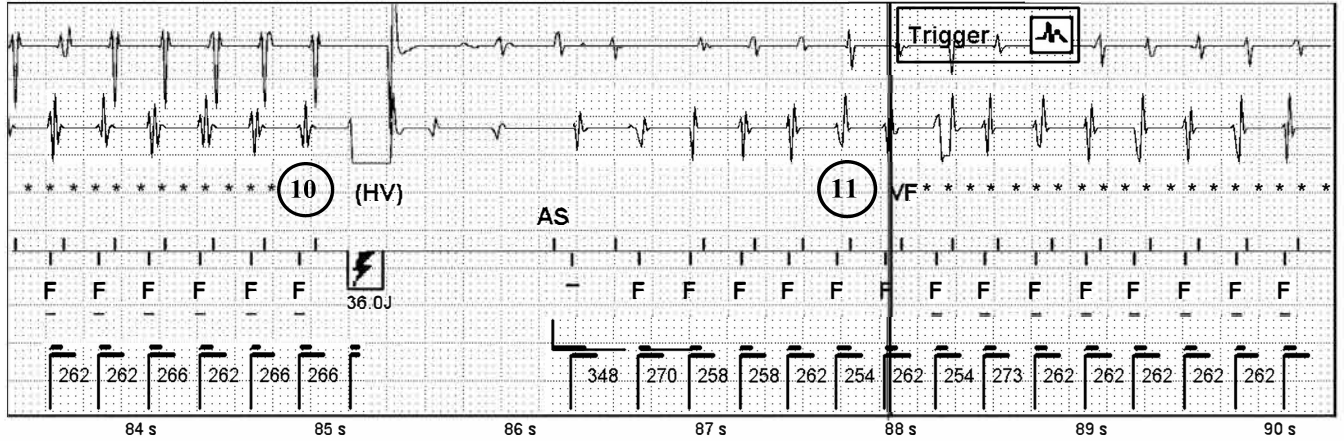
Page 6 of 11

1: A Sense Amp AutoGain (2.1 mm/mV)

3: Markers

2: V Sense Amp AutoGain (0.4 mm/mV)

Sweep Speed: 25 mm/s





Episode: VF (230 bpm / 260 ms) (Continued)

VT/VF Episode 6 of 6

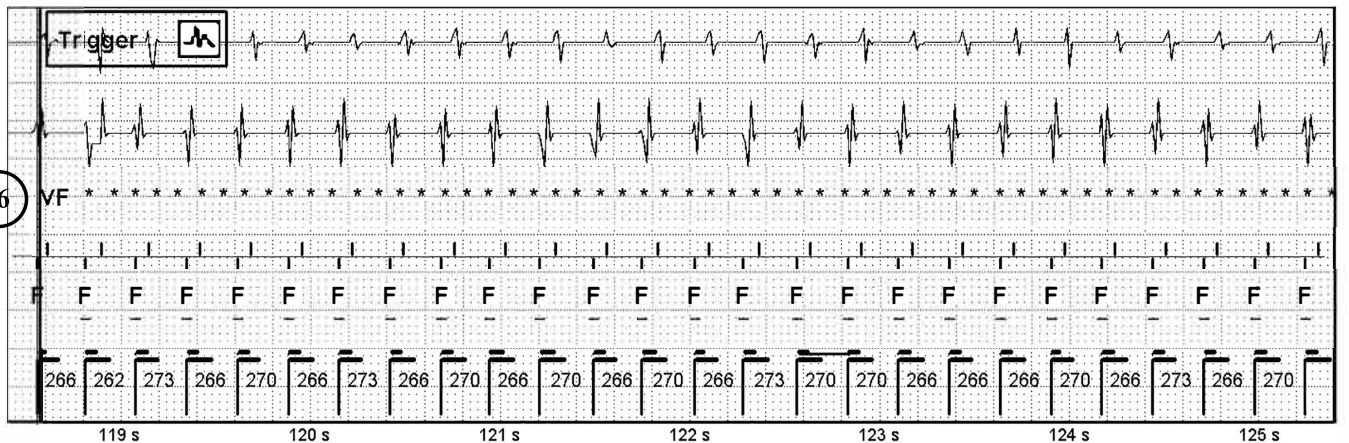
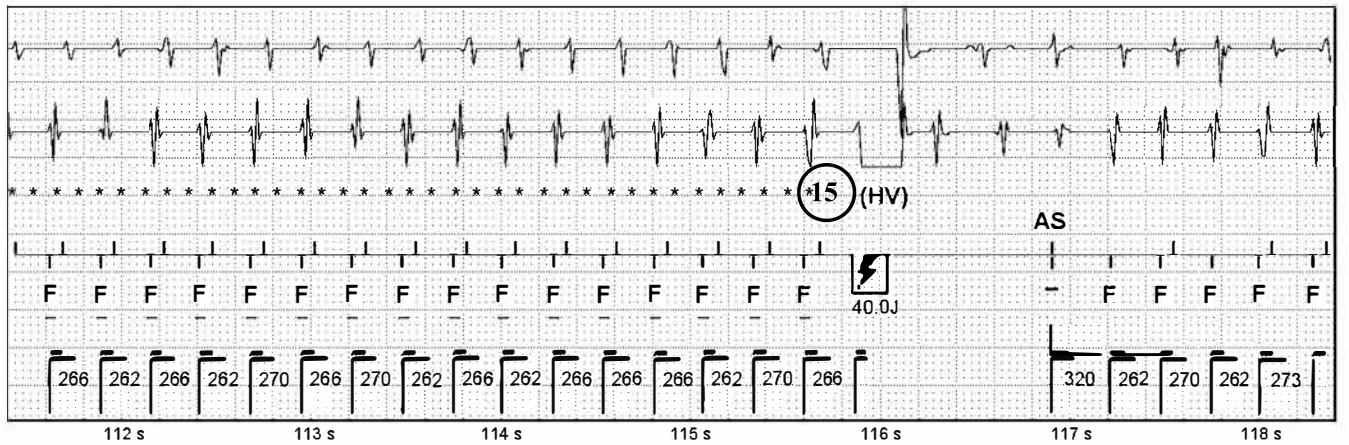
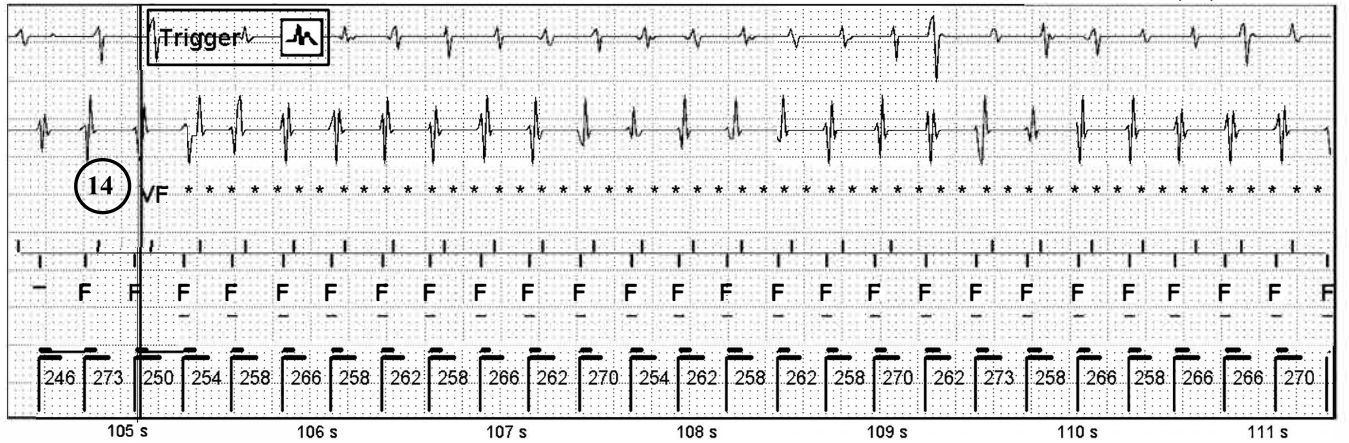
Page 7 of 11

1: A Sense Amp AutoGain (2.1 mm/mV)

3: Markers

2: V Sense Amp AutoGain (0.4 mm/mV)

Sweep Speed: 25 mm/s



Episode: VF (230 bpm / 260 ms) (Continued)

VT/VF Episode 6 of 6

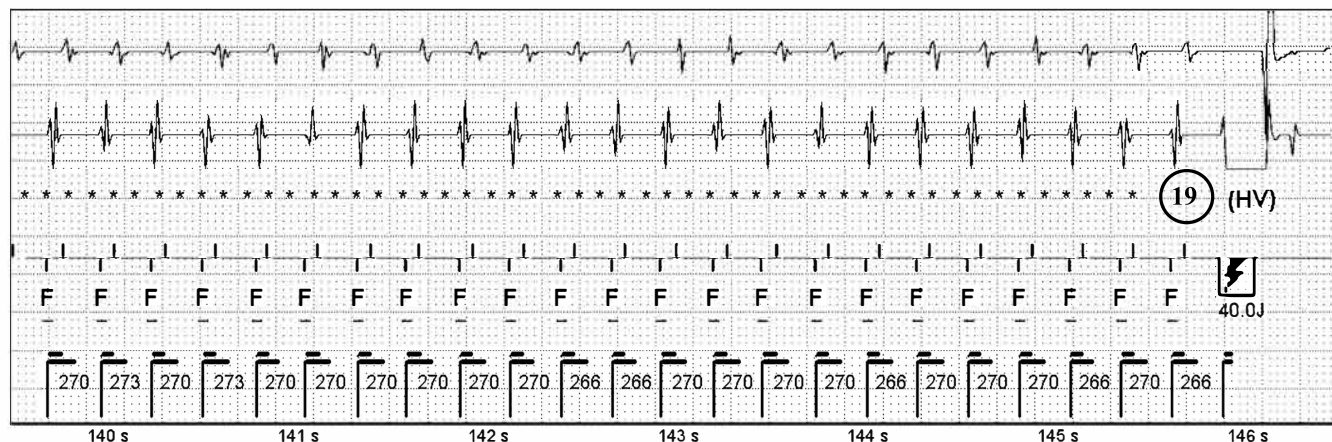
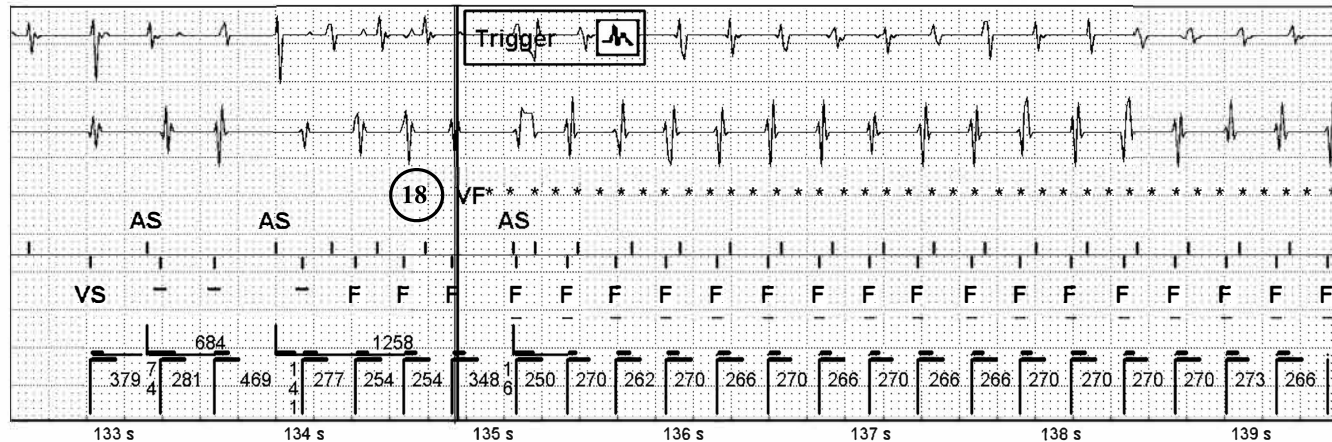
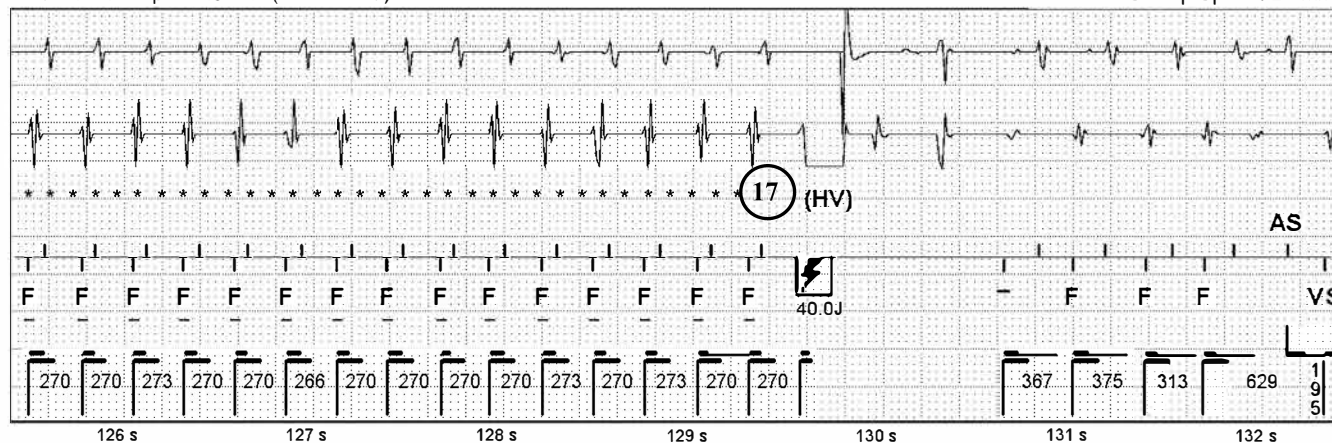
Page 8 of 11

1: A Sense Amp AutoGain (2.1 mm/mV)

3: Markers

2: V Sense Amp AutoGain (0.4 mm/mV)

Sweep Speed: 25 mm/s





Episode: VF (230 bpm / 260 ms) (Continued)

VT/VF Episode 6 of 6

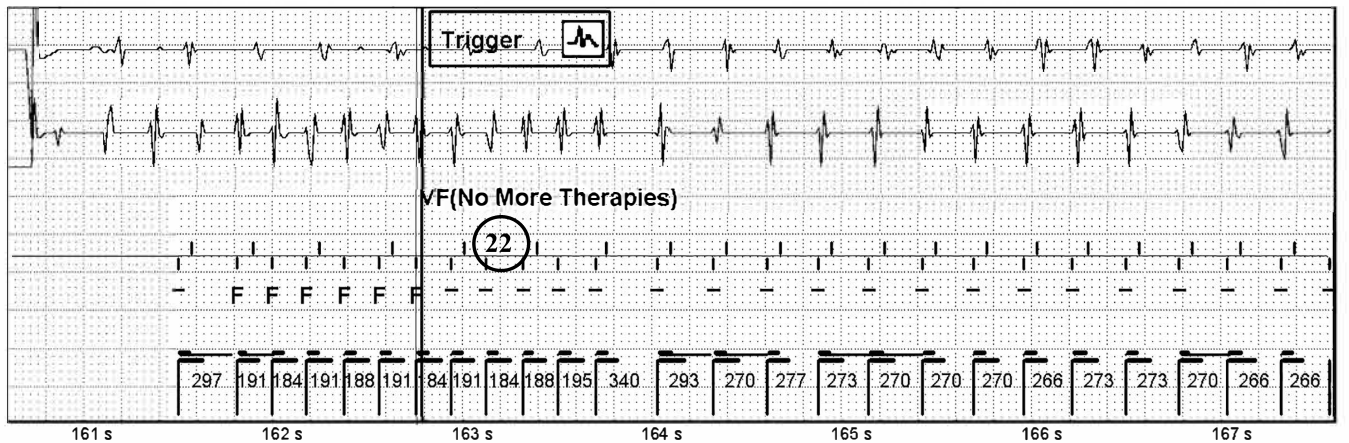
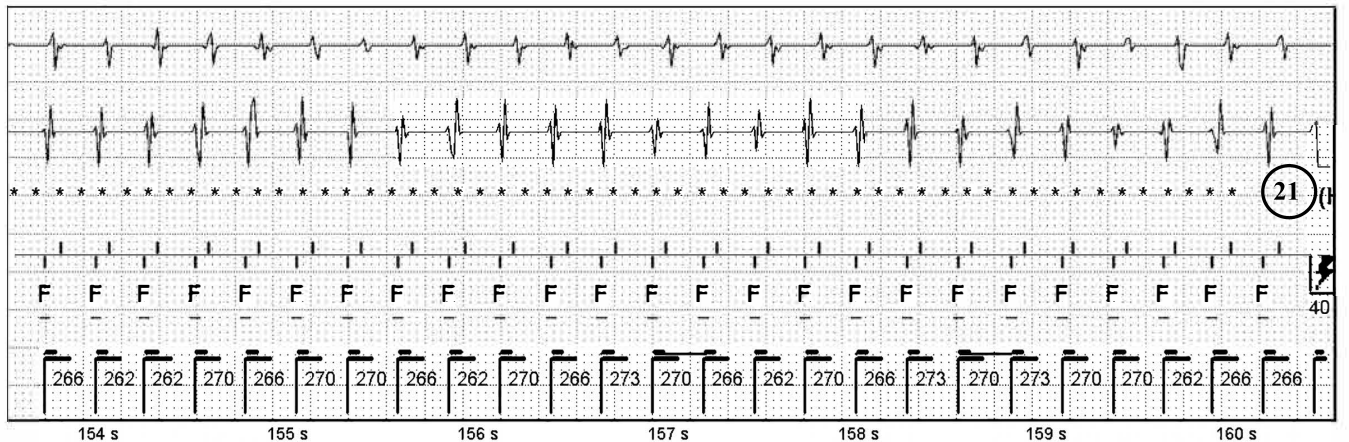
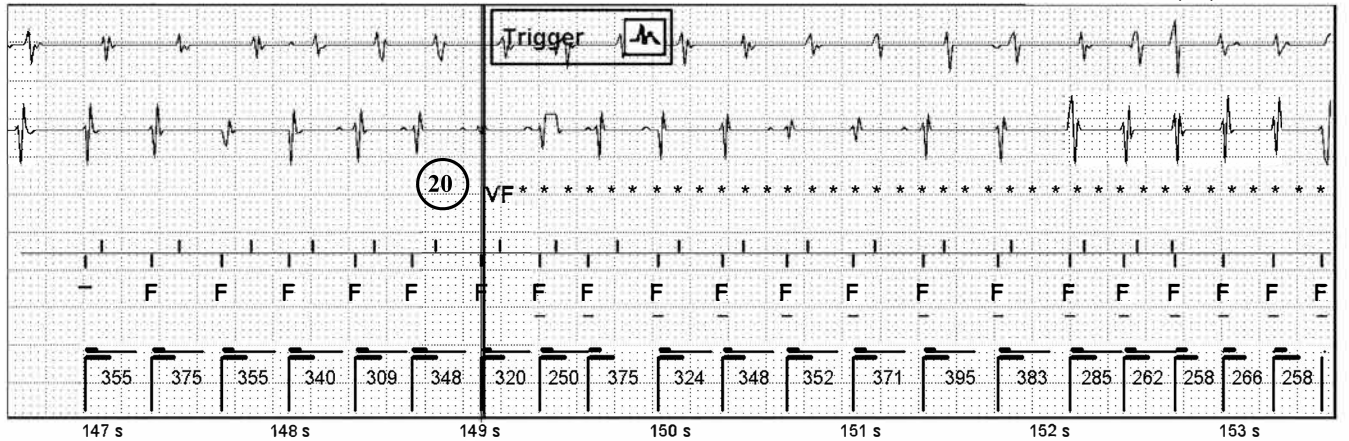
Page 9 of 11

1: A Sense Amp AutoGain (2.1 mm/mV)

3: Markers

2: V Sense Amp AutoGain (0.4 mm/mV)

Sweep Speed: 25 mm/s





Episode: VF (230 bpm / 260 ms) (Continued)

VT/VF Episode 6 of 6

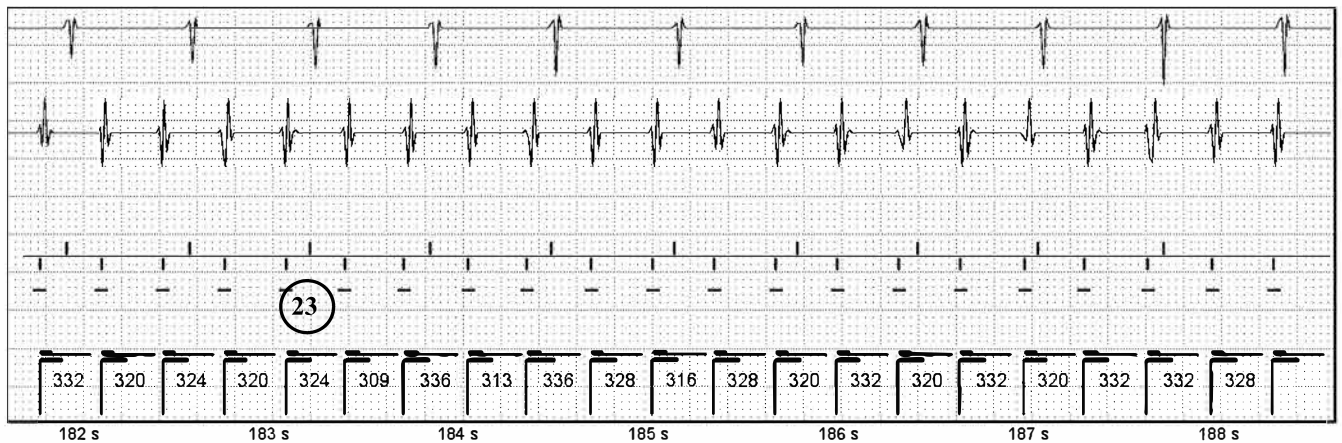
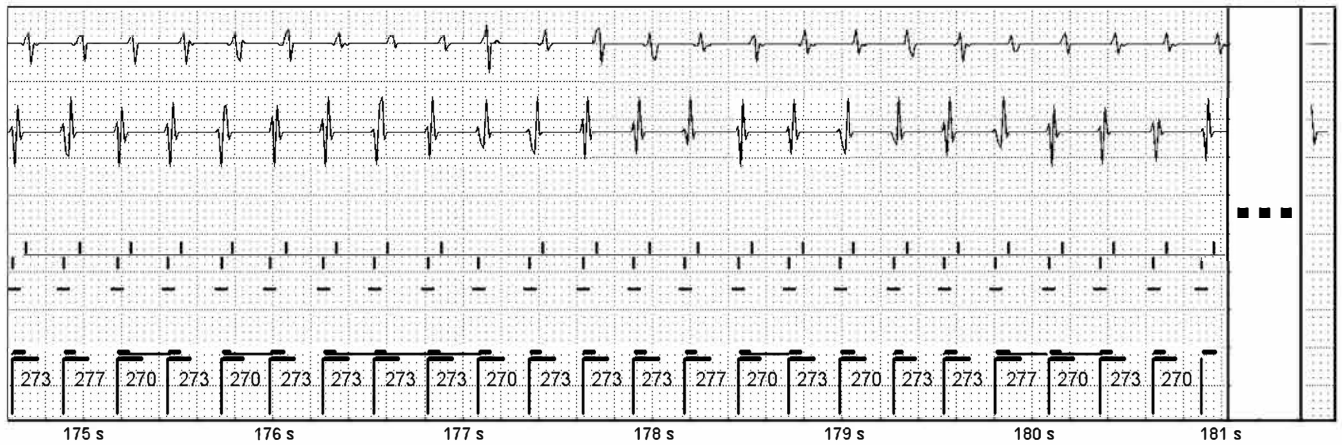
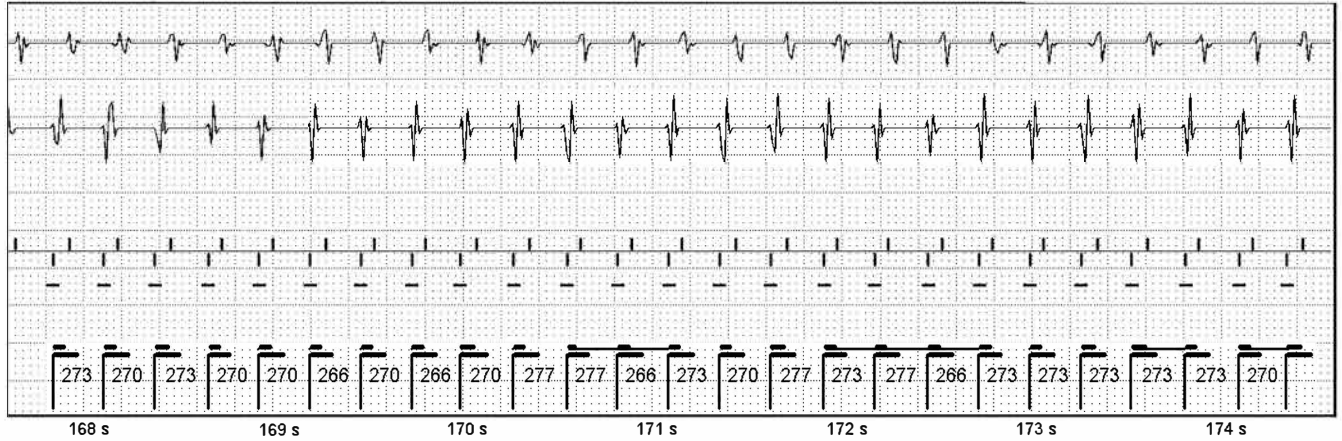
Page 10 of 11

1: A Sense Amp AutoGain (2.1 mm/mV)

3: Markers

2: V Sense Amp AutoGain (0.4 mm/mV)

Sweep Speed: 25 mm/s





Episode: VF (230 bpm / 260 ms) (Continued)

Page 11 of 11

Sweep Speed: 25 mm/s

