



Episode: SVT (142 bpm / 420 ms)

VT/VF Episode 42 of 66

Page 1 of 3

Duration 00:28 (M:S) No Alerts
Detection Criteria 142 - 213 bpm

Therapy

No therapies were delivered

Results

Diagnosis Summary

	Diagnosis
	SVT
Time to Diagnosis	15.75 sec
Rate (CL)	142 bpm (420 ms)
Zone	VT-1 (Monitor)
VT Diagnosis Criteria	All
Rate Branch Classification	Sinus Tach (V = A) Rate Branch

Morphology

On, $\geq 60\%$ is a match, ≥ 5 matches indicate SVT
Min Match Score 93%
Max Non-Match Score n/a
No. Template Matches 8 of 8 (SVT Indicated)

Sudden Onset

On, $< 20\%$ indicates SVT
Max Delta 2 % (SVT Indicated)

SVT Criteria Statistics

SVT Diagnoses during this episode 2

Measured SVT Discriminator values for Episode

Min Match Score	93 %	Max Non-Match Score	0 %
Template Used	2 Dec 2009 11:10	Max Onset Delta	2 %

DeFT Response™ Settings (Shock Waveform)

			1st Phase	2nd Phase
Waveform	Biphasic	VF Shocks (Defib)	65 %	65 %
Waveform Mode	Tilt	VT Shocks (CVRT)	Same as Defib	Same as Defib
Shock Configuration	RV to SVC & Can			
RV Polarity	Anode(+)			
Defib Max Sensitivity	0.3 mV			



Episode: SVT (142 bpm / 420 ms)

VT/VF Episode 42 of 66

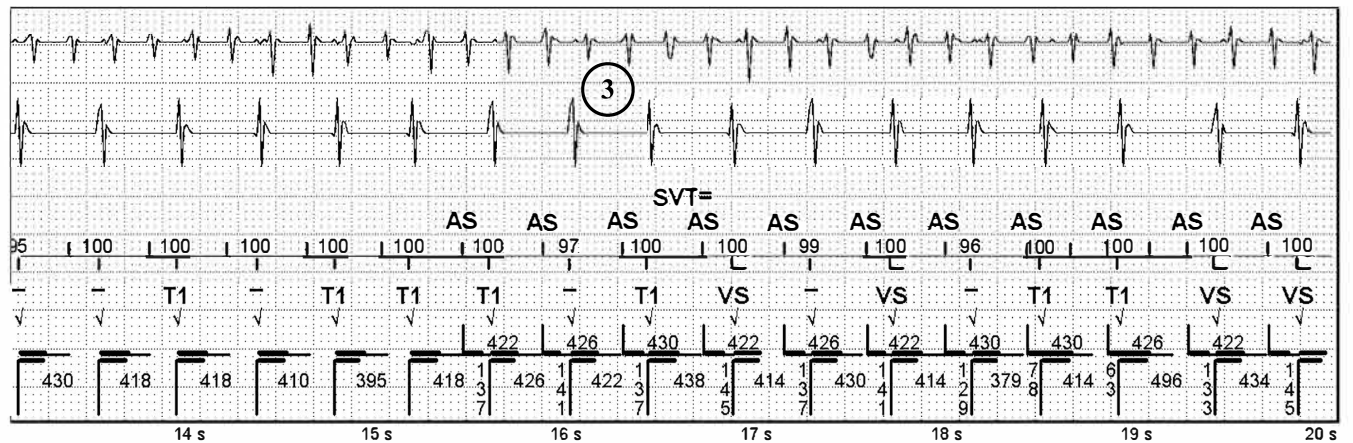
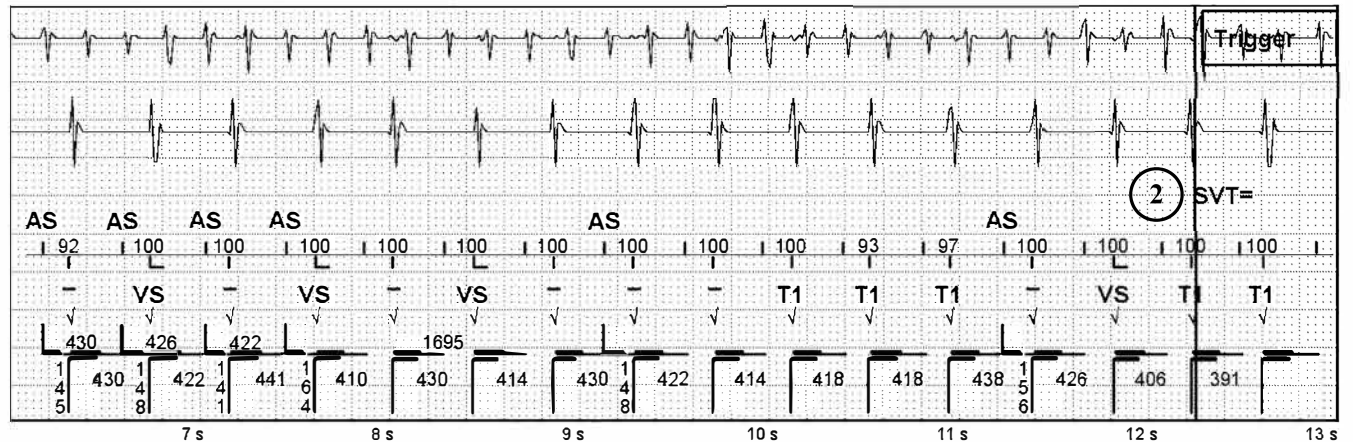
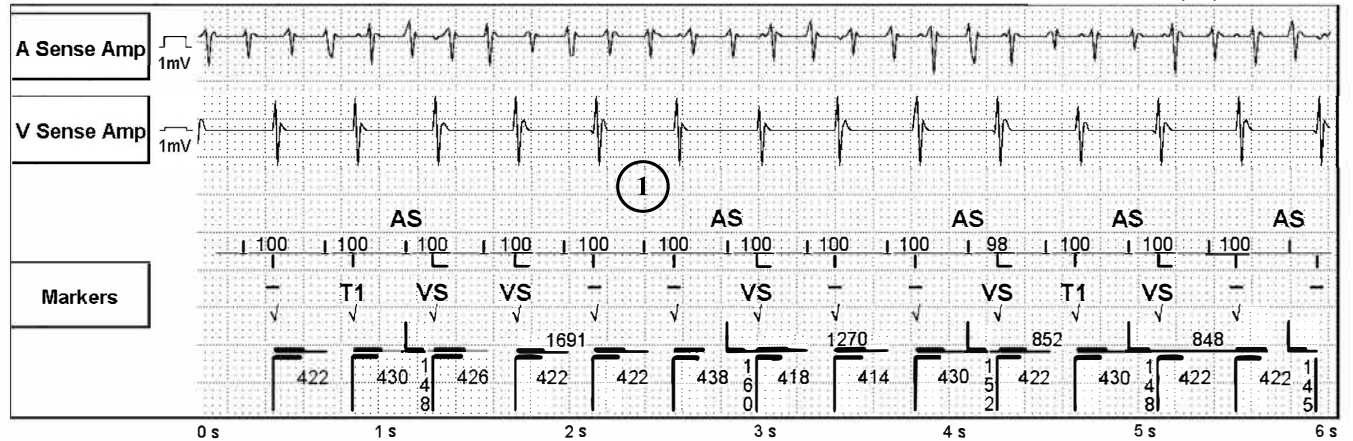
Page 2 of 3

1: A Sense Amp AutoGain (1.7 mm/mV)

3: Markers

2: V Sense Amp AutoGain (0.4 mm/mV)

Sweep Speed: 25 mm/s





Episode: SVT (142 bpm / 420 ms) (Continued)

Page 3 of 3

Sweep Speed: 25 mm/s

ECG rhythm strip showing a sequence of cardiac cycles. The strip is annotated with 'AS' (Atrial Sinus) and 'VS' (Ventricular Sinus) labels. A circled '4' is present above the 'Return To Sinus' text. The strip includes timing markers from 21 s to 27 s and numerical data below the waveform.

Time (s)	AS	VS	T1	Return To Sinus
21.0	100	VS		
21.5	100			
22.0	100			
22.5	100			
23.0	100			
23.5	100			
24.0	100			
24.5	100			
25.0	100			
25.5	100			
26.0	100			
26.5	100			
27.0	100			

