



# non sustained VT/VF episode # 1 16799

Device: Concerto II CRT-D D294TRK

---

Episode #16799: 09:03:10

## Episode Summary

Initial type VT non sustained (spontaneous)  
Duration 1 s (11 beats)  
V. médian 171 min<sup>-1</sup> (350 ms)  
Activity at onset Off, Sensor = 74 bpm

4

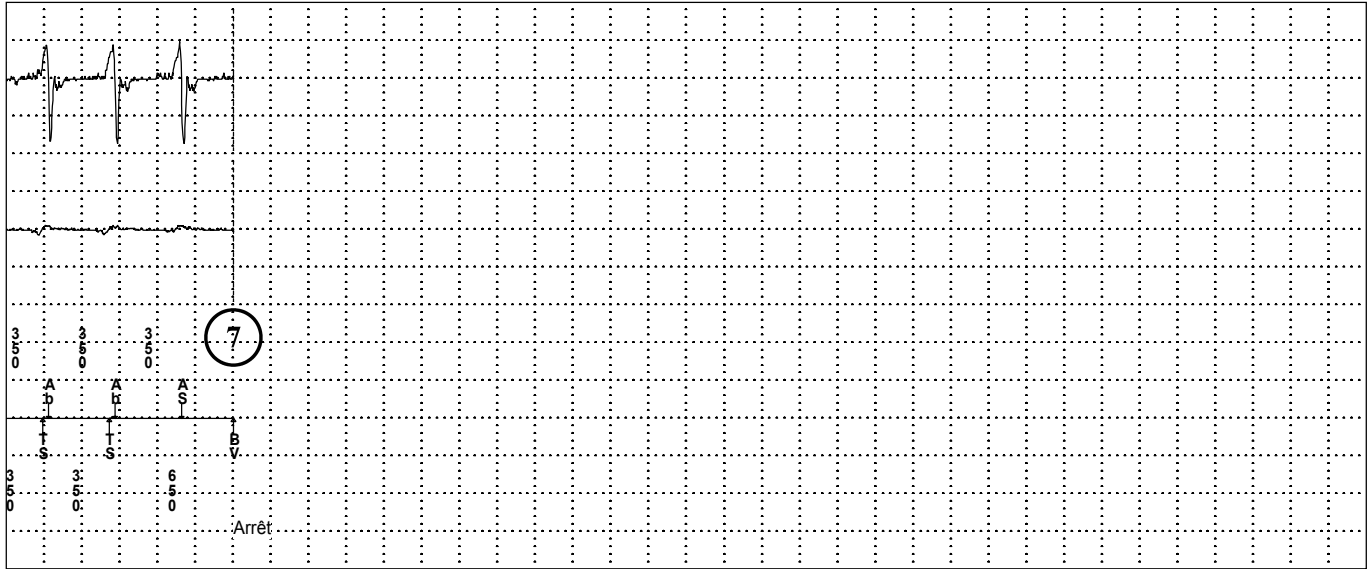
Parameter Settings		Initial	Redetect	V. Interval (Rate)
VF	On	18/24	9/12	280 ms (214 bpm)
FVT	via VF			240 ms (250 bpm)
VT	On	16	12	430 ms (140 bpm)
Monitor	Off	20		

EGM	Source	Range	Sensitivity	
EGM1	Atip/Aring	+/- 8 mV	Atrial	0.3 mV
EGM2	RVtip/RVring	+/- 8 mV	RV	0.3 mV

Device : **Concerto II CRT-D D294TRK**

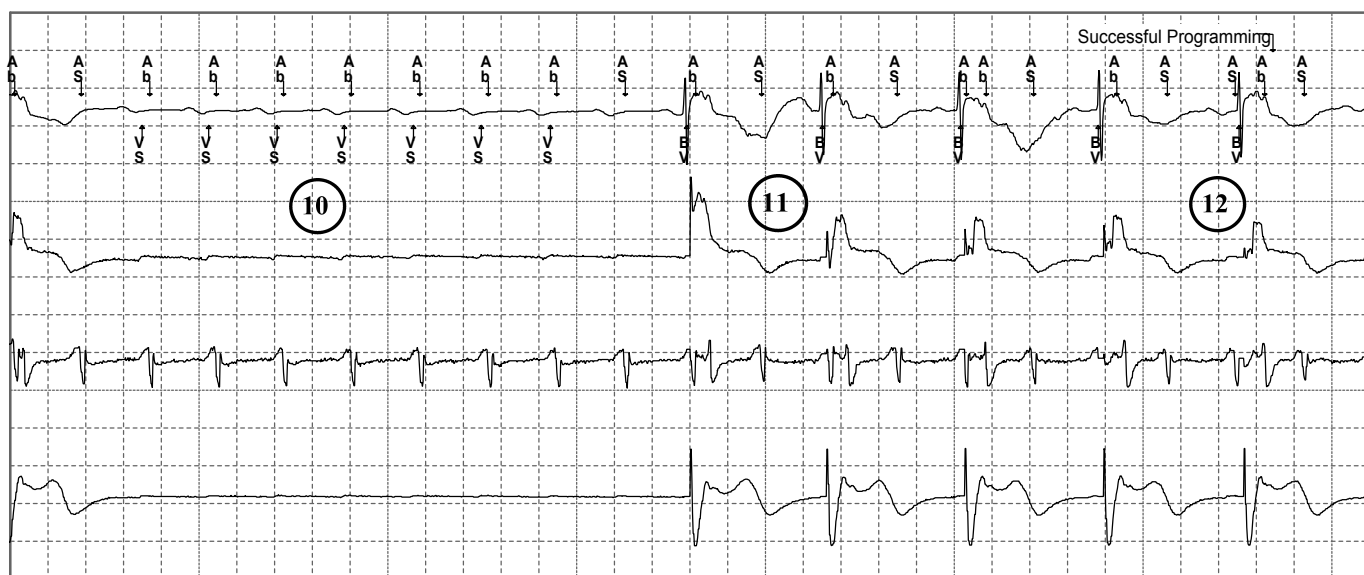
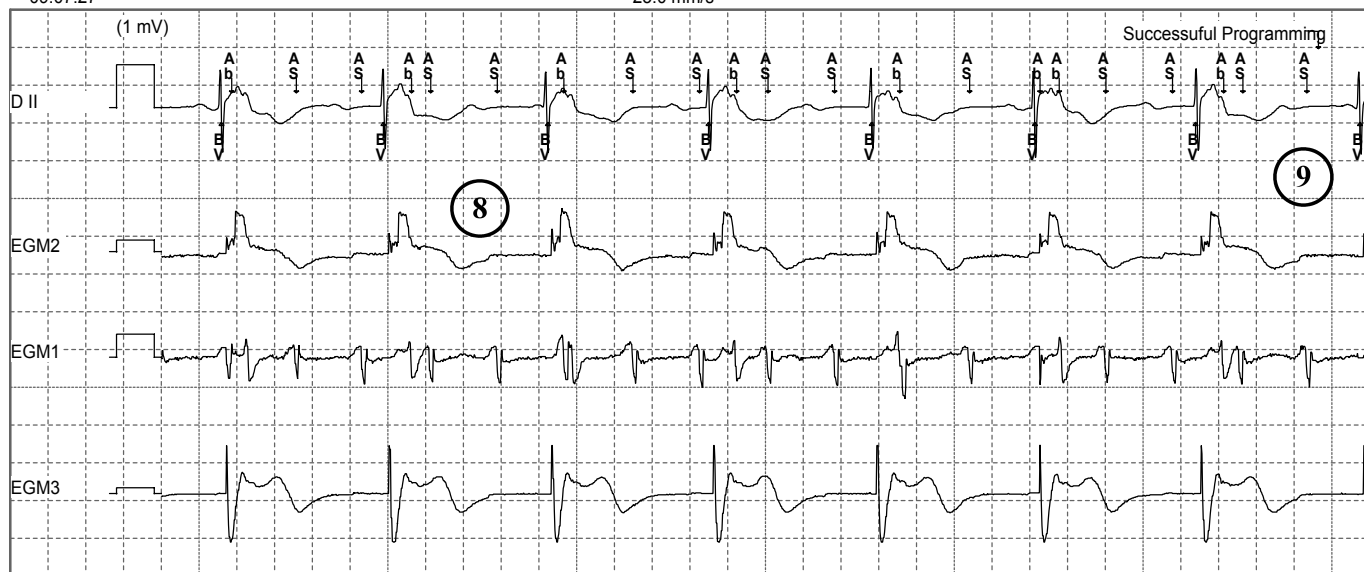
# non sustained VT/VF episode # 1 16799

Device : Concerto II CRT-D D294TRK



09:07:27

25.0 mm/s



09:07:40

25.0 mm/s

End

