

Episode: VF, V Lead Noise (226 bpm / 265 ms)

5 Nov 2015 13:40

Duration 00:54 (M:S)  
Detection Criteria 222 bpm

Alerts



SecureSense™ is On, and it inhibited therapy due to V lead noise

Therapy Results  
All therapies were inhibited.

Diagnosis Summary

Diagnosis

V Lead Noise

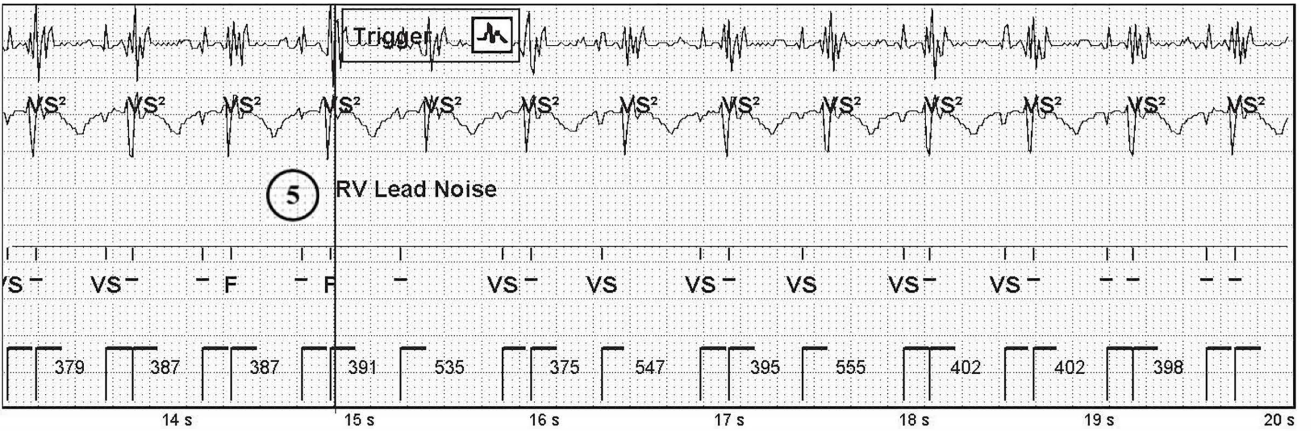
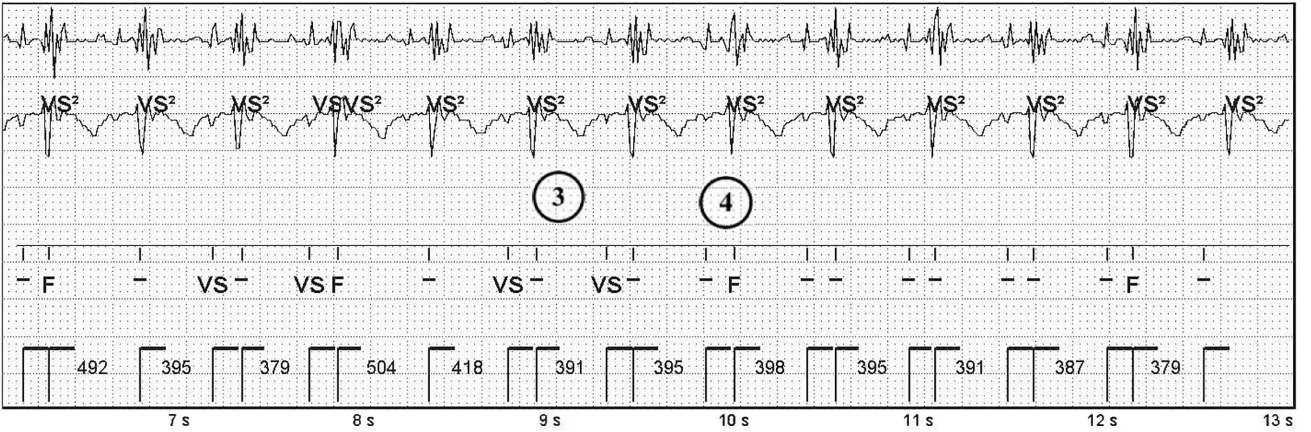
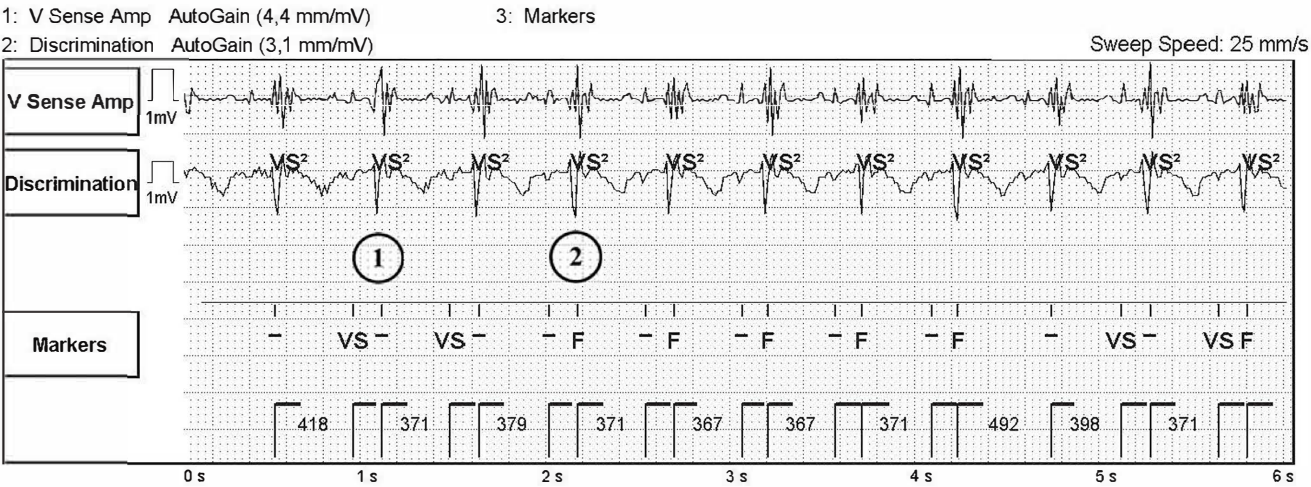
Time to Diagnosis 32,00 sec  
Rate (CL) 226 bpm (265 ms)

DeFT Response™ Settings (Shock Waveform)

Waveform	Biphasic	VF Shocks (Defib)	1st Phase	2nd Phase
Waveform Mode	Tilt	VT Shocks (CVRT)	65 %	65 %
Shock Configuration	RV to Can		Same as Defib	Same as Defib
RV Polarity	Anode(+)			
Defib Max Sensitivity	0.5 mV			

Episode: VF, V Lead Noise (226 bpm / 265 ms)

5 Nov 2015 13:40



---

# Episode: VF

17 May 2014 6:59

VT/VF Episode 2 of 31

Page 1 of 3

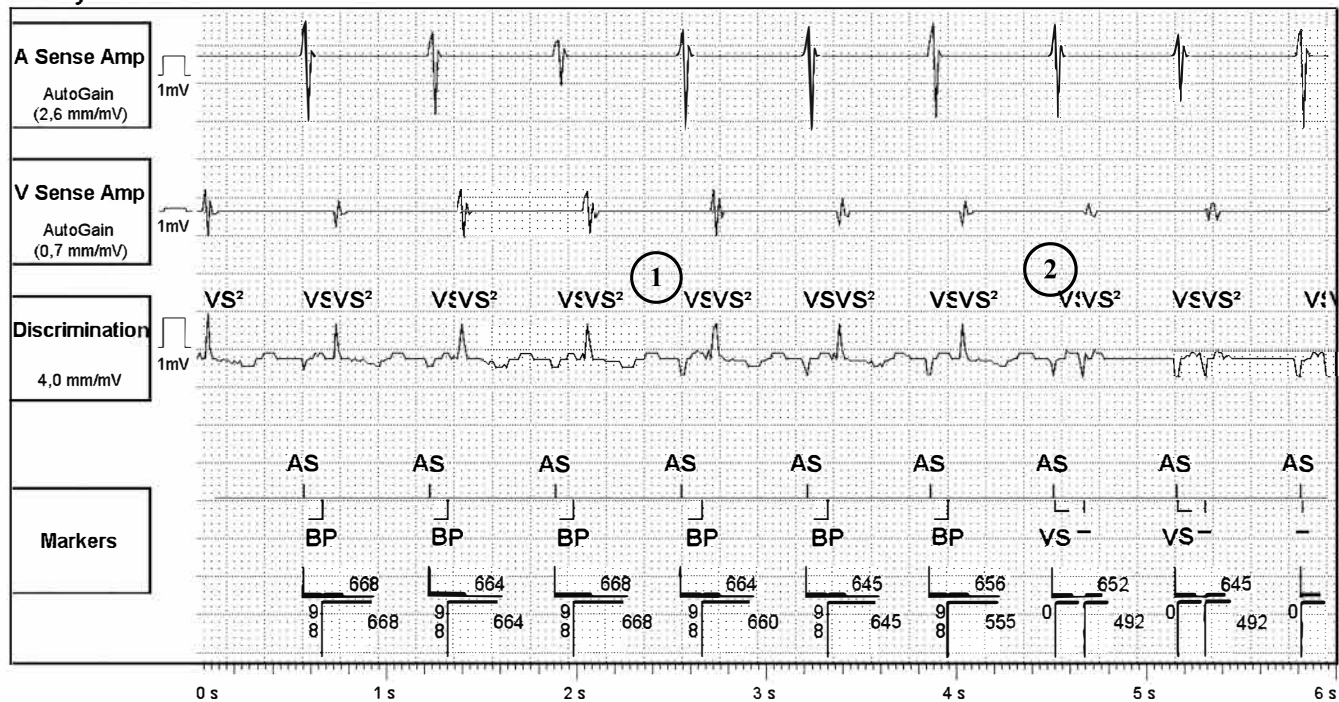
Diagnostics and Parameters Unavailable

# Episode: VF

VT/VF Episode 2 of 31

Page 2 of 3

17 May 2014 6:59



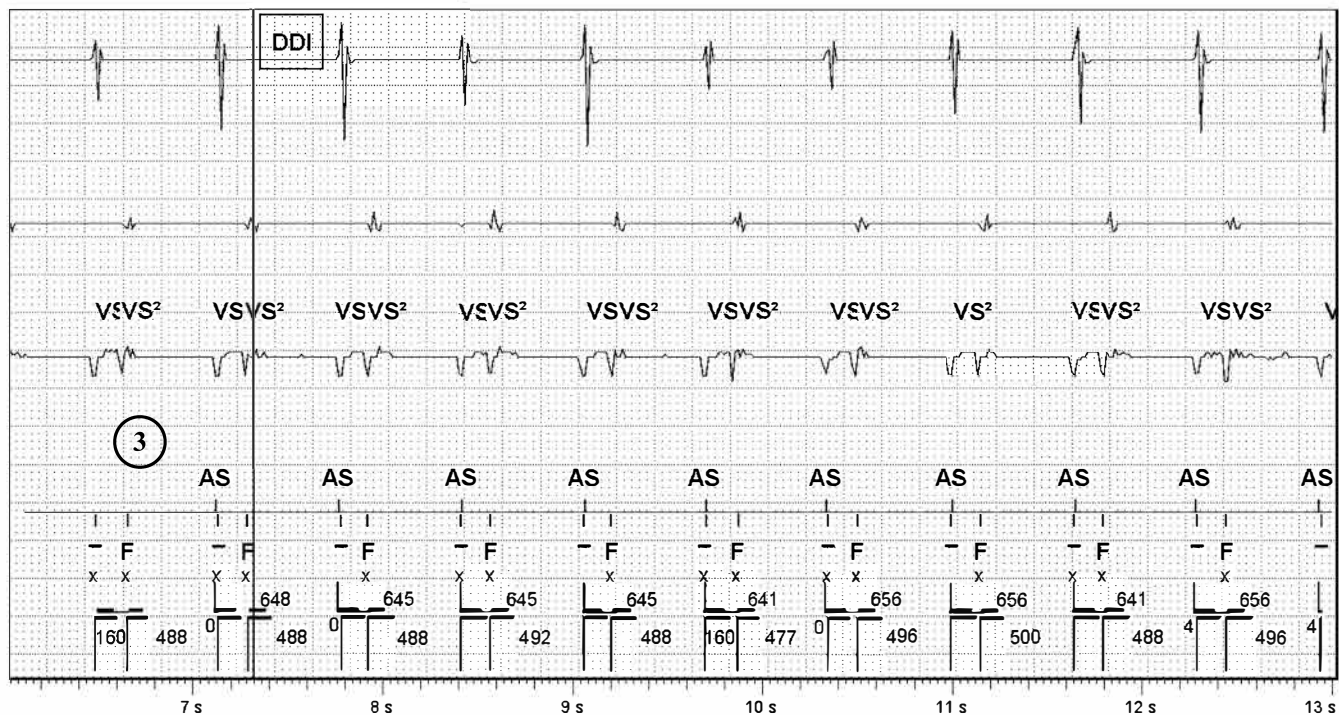
1: A Sense Amp AutoGain (2,6 mm/mV)

4: Markers

2: V Sense Amp AutoGain (0,7 mm/mV)

3: Discrimination 4,0 mm/mV

Sweep Speed: 25 mm/s



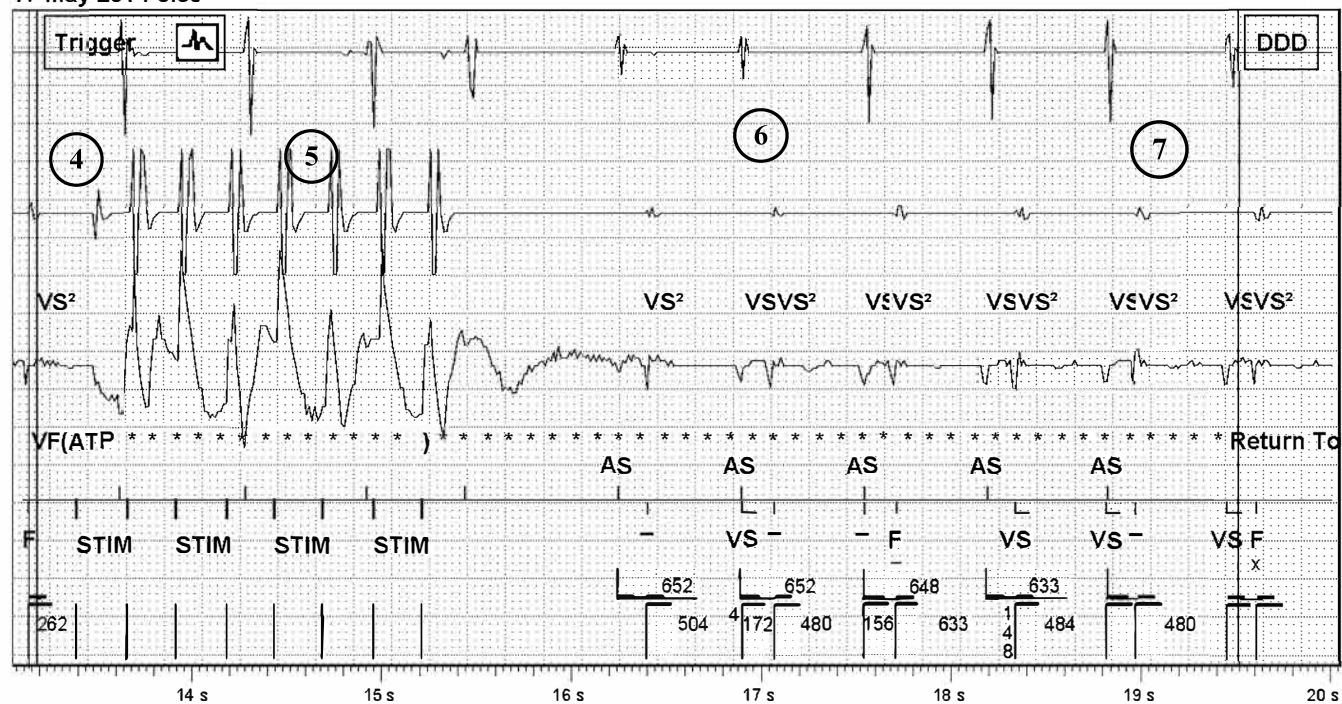


## Episode: VF (Continued)

VT/VF Episode 2 of 31

Page 3 of 3

17 May 2014 6:59



1: A Sense Amp AutoGain (2,6 mm/mV)

#### 4: Markers

2: V Sense Amp AutoGain (0,7 mm/mV)

3: Discrimination 4,0 mm/mV

Sweep Speed: 25 mm/s

