

Episode: Non-sustained RV Oversensing

Other Episode 21 of 22

Page 1 of 2

15 Oct 2013 19:25

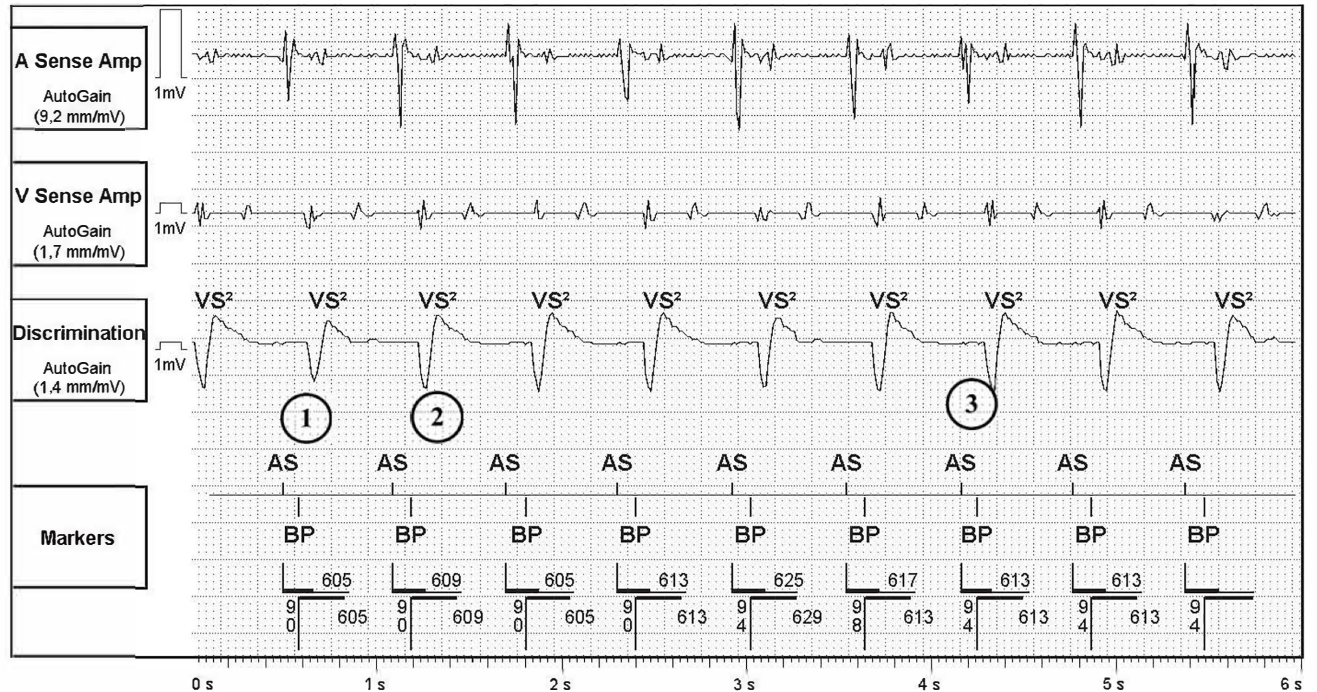
Mode

DDD

- 1: A Sense Amp AutoGain (9,2 mm/mV)
- 2: V Sense Amp AutoGain (1,7 mm/mV)
- 3: Discrimination AutoGain (1,4 mm/mV)

4: Markers

Sweep Speed: 25 mm/s

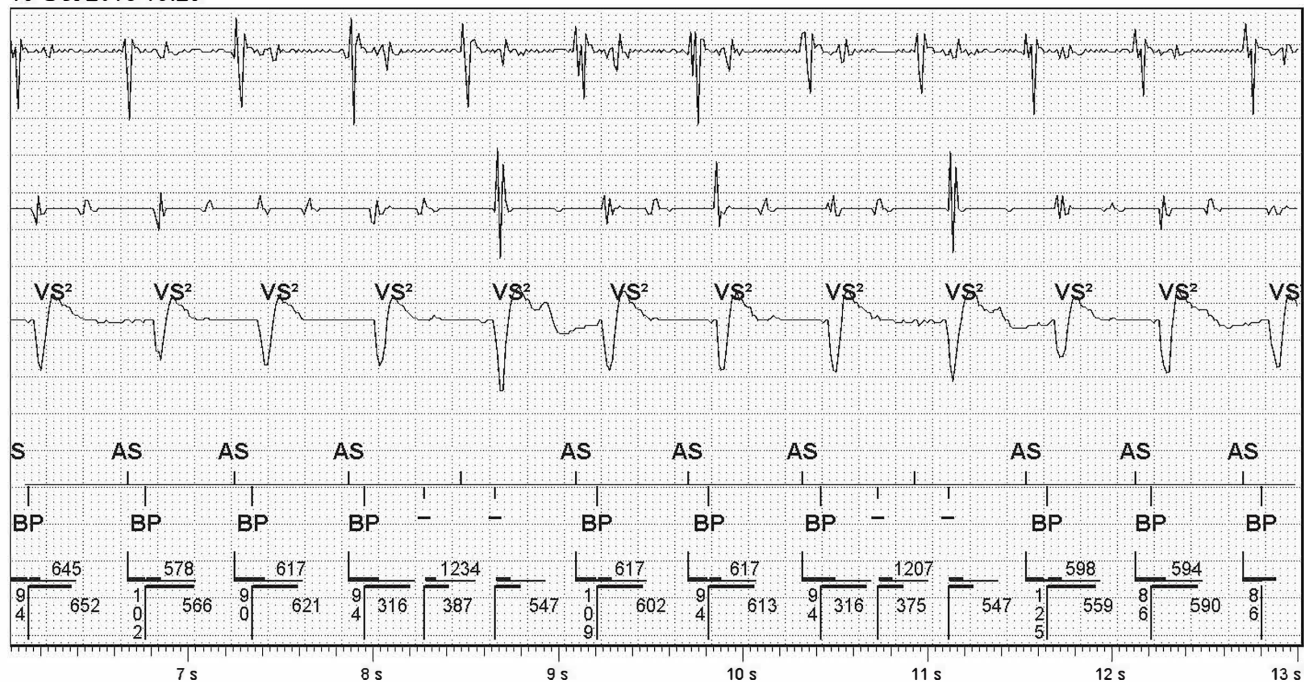


Episode: Non-sustained RV Oversensing (Continued)

Other Episode 21 of 22

Page 2 of 2

15 Oct 2013 19:25



- 1: A Sense Amp AutoGain (9,2 mm/mV)
- 2: V Sense Amp AutoGain (1,7 mm/mV)
- 3: Discrimination AutoGain (1,4 mm/mV)

4: Markers

Sweep Speed: 25 mm/s

