



ZOOM® View™ DISK

## Selected Episodes Report

Report Created 03 Jul 2014

Date of Birth

Device

Tachy Mode

INCEPTA ICD E160/

Monitor + Therapy

Last Office Interrogation

15 May 2014

Implant Date

21 Nov 2012

## Event V-2163: 02 Apr 2014 13:06

## VT-1 Event Onset

Avg V Rate: 118 bpm

Detection: Rhythm ID

Template: 02 Apr 2014 11:27

RhythmMatch™ Threshold: 94 %

## At Inhibit

RhythmID Correlated: True

RhythmMatch™: 96 %

## At V-Detect

Avg V Rate: 121 bpm

Rate Zone: VT-1

RhythmMatch™: 93 %

SRD Met: False

ATP Timeout: False

## Attempt 1, Scan V ATP

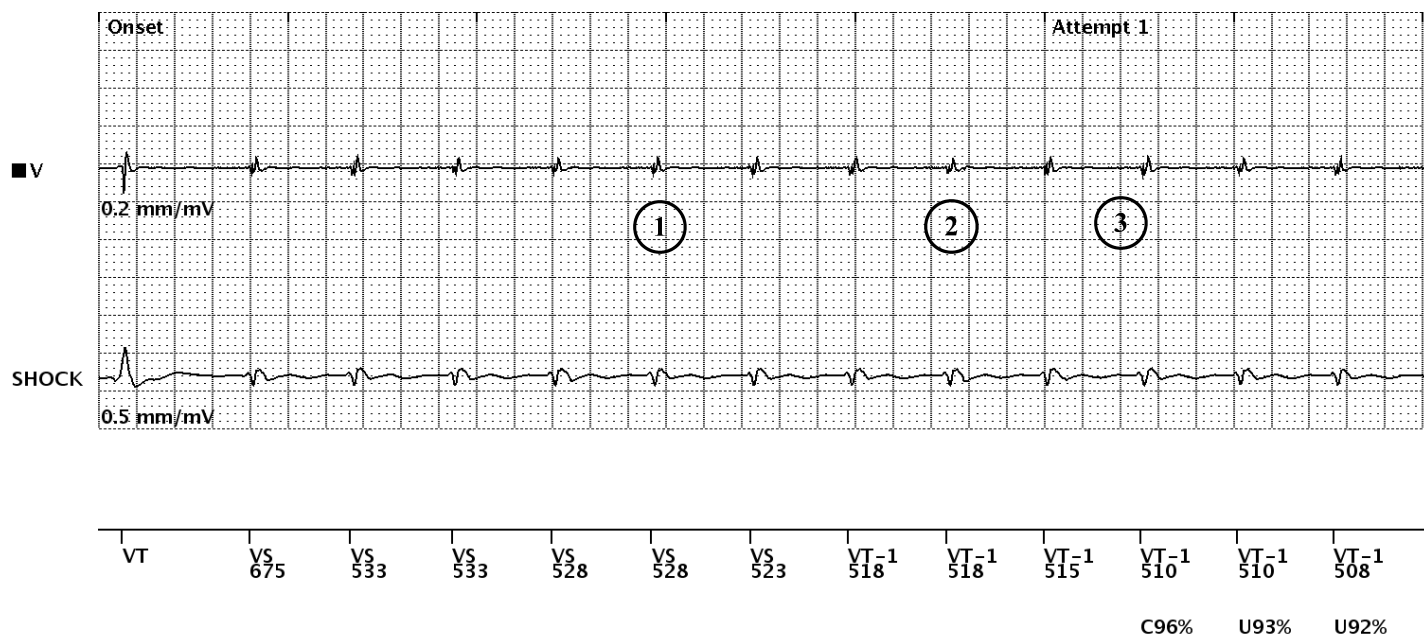
Elapsed Time: 00:00:47

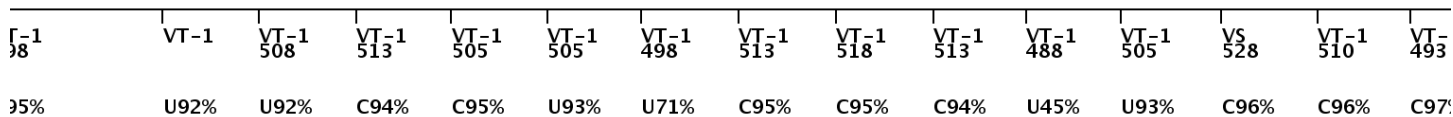
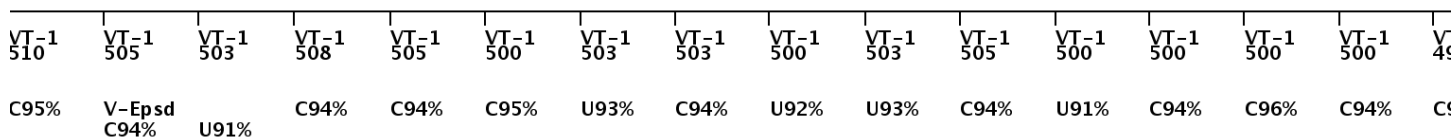
Inhibited Attempt

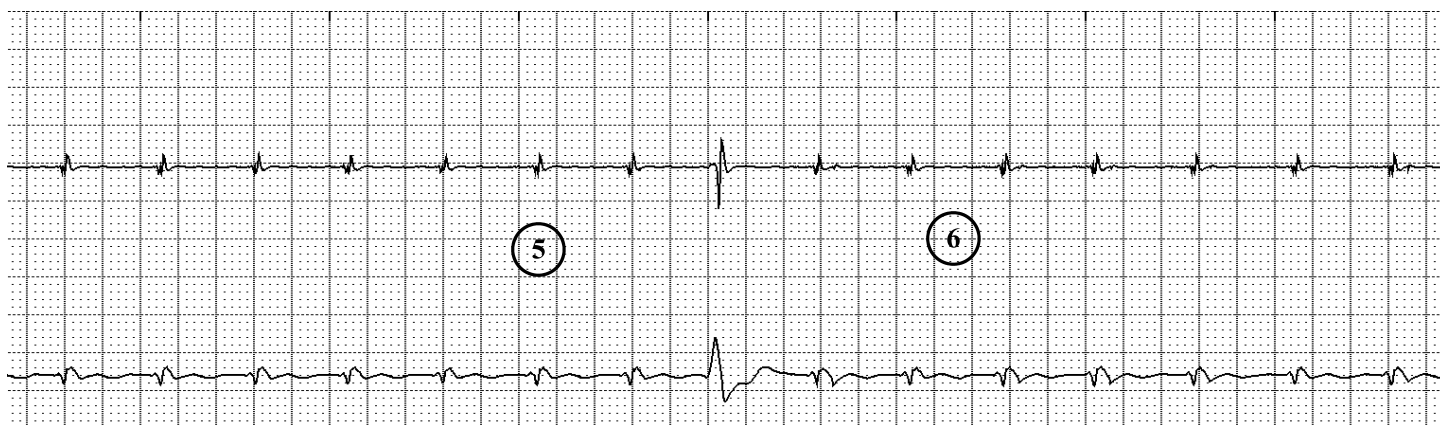
## ATP Information:

Number of Bursts: 3

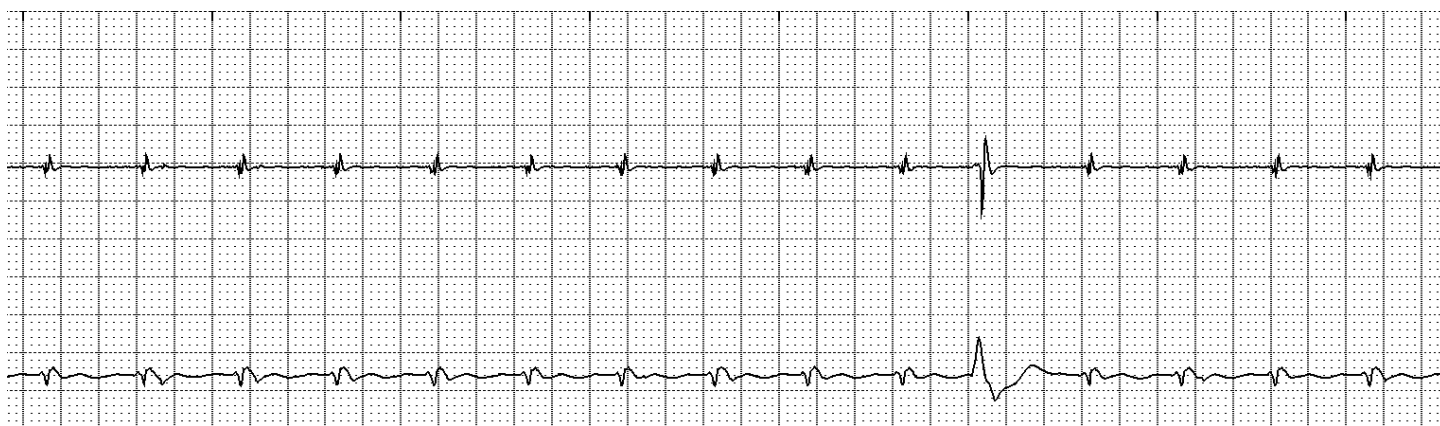
## Event Ended 00:01:24



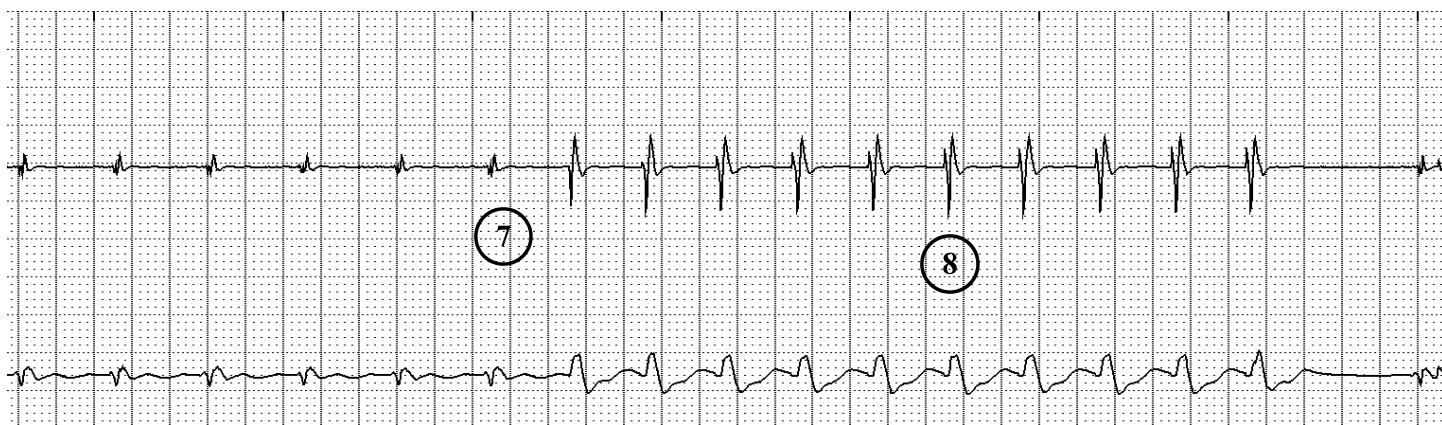




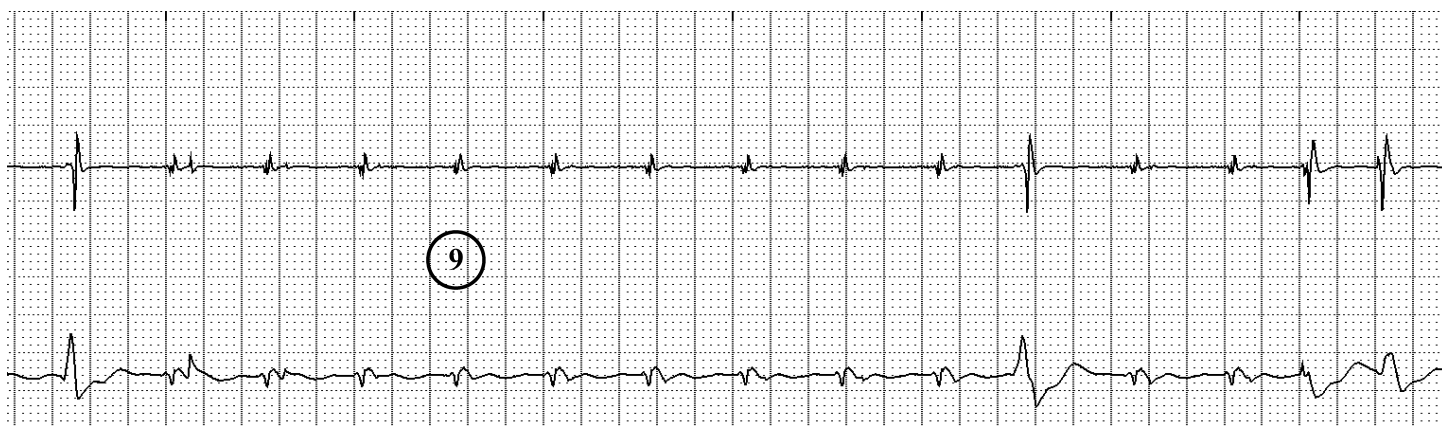
1	VT-1 495	VT-1 505	VT-1 503	VT-1 495	VT-1 495	VT-1 498	VT-1 493	VT-1 440	VS 550	VT-1 488	VT-1 495	VT-1 480	VS 525	VS 535	VT-1 510
%	C97%	C96%	C96%	C95%	C94%	V-Dur RID+ C95%	RID+ C95%	RID+ U0%	RID+ U77%	RID+ U93%	RID+ U88%	RID+ U87%	RID+ U90%	RID+ C95%	RID+ U88%



VT-1 508	VT-1 513	VT-1 515	VT-1 510	VT-1 508	VT-1 503	VT-1 493	VT-1 493	VT-1 493	VT-1 493	VT-1 398	VS 595	VT-1 490	VT-1 495	VT-1 493
RID+ C94%	RID+ C94%	RID+ U91%	RID+ U90%	RID+ C94%	RID+ U93%	RID+ C96%	RID+ U93%	RID+ C95%	RID+ C95%	RID+ U0%	RID+ U93%	RID+ C95%	RID+ C97%	RID+ U93%



VT-1 495	VT-1 498	VT-1 498	VT-1 498	VT-1 495	VT-1 495	VP 400	VP 400	VP 400	VP 400	VP 400	VP 400	VP 400	VP 400	VP 400	VP 400	--
RID+ U93%	RID+ U93%	RID+ U93%	RID+ U93%	RID+ U93%	RID- V-Detect											

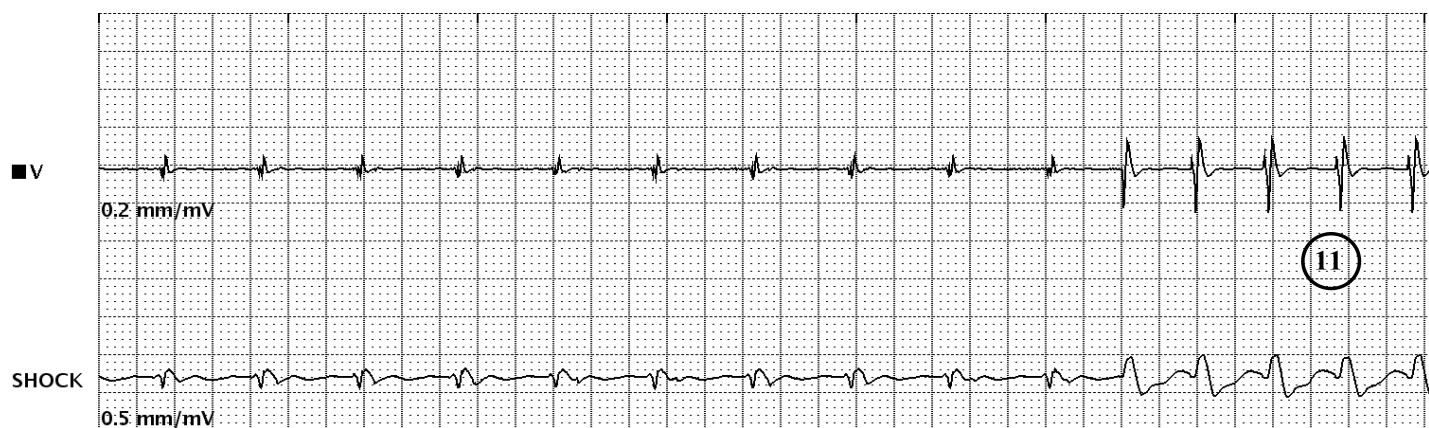


VT-1 473	VS 548	VT-1 500	VT-1 503	VT-1 505	VT-1 505	VT-1 505	VT-1 510	VT-1 513	VT-1 513	VT-1 465	VS 570	VT-1 513	VP 390	VP 390

V-Dur    V-Detect

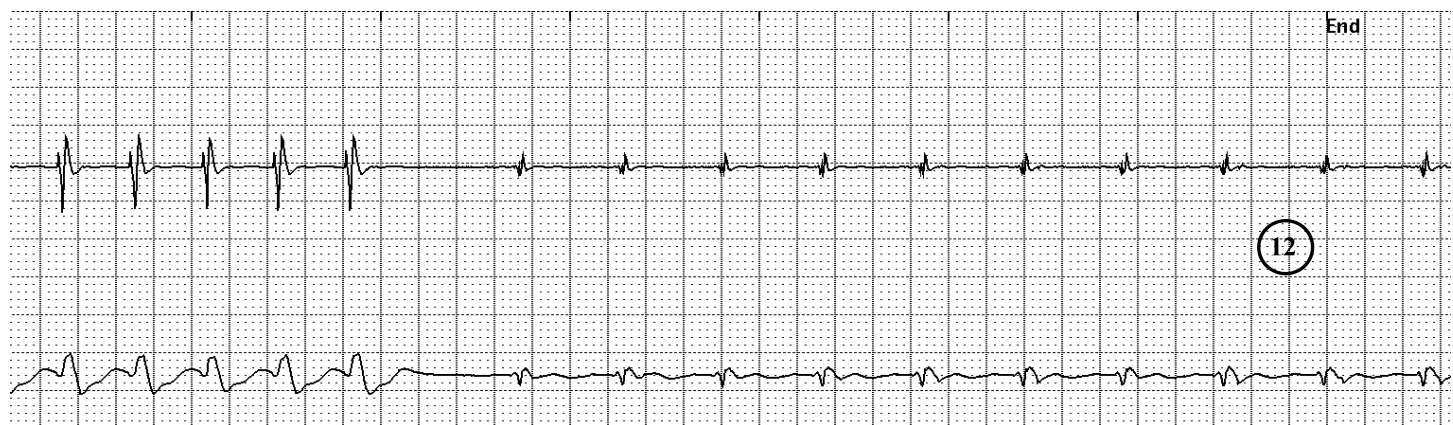


VP 390 VP 390 VP 390 VP 390 VP 390 VP 390 VP 390 VP 390 -- VS 533

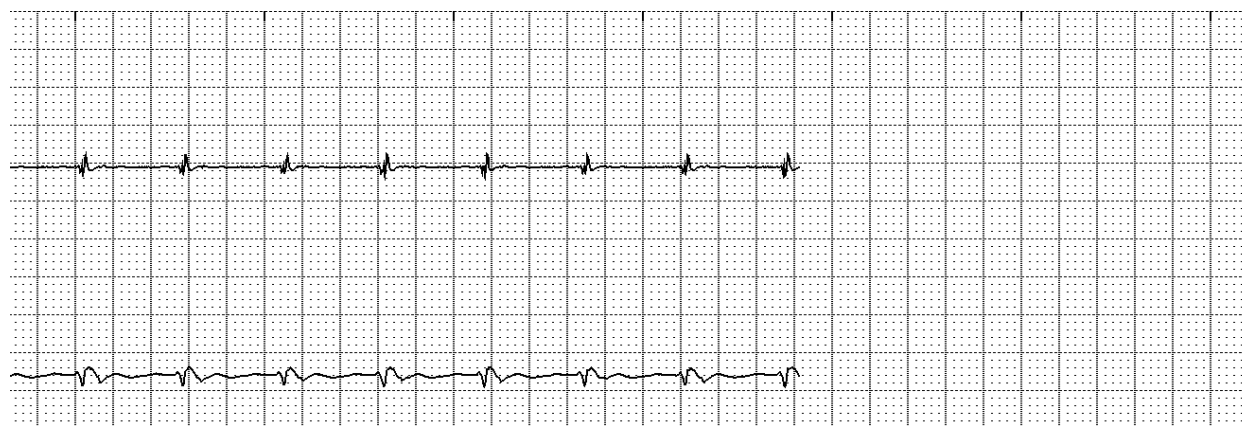


VT-1 VT-1 VT-1 VT-1 VT-1 VT-1 VT-1 VT-1 VS 523 VT-1 VP 380 VP 380 VP 380 VP 380 VP 38

V-Detect



0 VP 380 VP 380 VP 380 VP 380 VP 380 -- VS 543 VS 530 VS 528 VS 528 VS 530 VS 528 VS 530 VS 530 VS 528



i VS 530 VS 530 VS 530 VS 528 VS 530 VS 530 VS 530 VS 530

